



SUPREME HOMES

THE COMFORT SOLUTION

# *Mini Home Catalogue*





# Supreme Homes Has The Mini Home Of Your Choice For Your Lifestyle!

Welcome to **Supreme Homes**, one of the largest and most respected builder of manufactured homes in Atlantic Canada. We're a leader in the industry and consistently deliver so much more than our customers expect. We offer innovative quality features & options and customized floor plans with plenty of friendly, helpful customer service included. Let us custom create a Mini Home that will fit into your individual lifestyle preferences.

We promise you a lifetime of security and happy memories in a Mini Home you will be proud to call your own. As one of Atlantic Canada's largest home builder, our Mini Homes provide the best housing value for every age group and demographic. Whether you have an active, young family or you are an empty-nester ready to relax and enjoy the joys retirement has to offer, *we have your home*. Our impressive, large selection of floor plans, color choices and options will allow you the specific design choices you desire.

Your new Supreme Homes Mini Home delivers comfort and quality at prices that will suit your budget. Choose from hundreds of amazing floor plans, then customize your plan to satisfy your specific needs. We build in state of the art, climate controlled facilities with engineered building systems that guarantee no delays caused by inclement weather.

Supreme Homes builds each and every Mini Home to meet or exceed strict building codes, and we set the bar even higher for ourselves. We pay strict

attention to what you see – and even closer attention to those little things you might miss. Each home is carefully inspected at every stage of construction. From the electrical to the plumbing, the kitchen cabinets to the bedroom closets, every Supreme Home undergoes rigorous quality inspections ensuring that you are being provided the best product we can deliver.

We're proud to say that we build more than just homes, we build trusting relationships. Our ability to satisfy our customer's unique needs reaches beyond their expectations. This trust is a tradition we certify in each and every Supreme Mini Home built. Our quality built Mini Homes can be found in triple wide, double wide, and singles. Compare our quality with our competition, then see us for the Mini Home of your dreams.

Supreme Homes excels in the creation of quality built Mini Homes. Our high standards are based on our many years of craftsmanship and excellence in the custom built Mini Home industry. Visit a friendly Supreme Mini Home retailer near you. Our retailers are the professionals when it comes to having the Mini Home of your dreams custom designed. We're sold throughout Atlantic Canada and Quebec. Visit our website at: [www.supremehomes.ca](http://www.supremehomes.ca).

*Supreme Homes...Building quality custom Mini Homes that suit your taste and your lifestyle.*



## *Mini-home configuration colour code*

Front Bedroom

Front Kitchen

Front Livingroom

Front Patio

# Supreme Mini Homes Are Built to the Highest Canadian Standards.

**Supreme Homes**, offers its Mini Home customers an outstanding home built with attention to every detail. For over 10 years we have been creating Mini Homes of amazing quality and value. Our guarantee ensures that only the best in building material and craftsmanship in your new Mini Home meets or exceeds the National Building Code. We believe that your satisfaction is absolutely crucial therefore we deliver only the best Mini Home the manufactured home industry has to offer. We're sold throughout Atlantic Canada and Quebec. Visit our website at: [www.supremehomes.ca](http://www.supremehomes.ca).



- 1. Supreme Quality Control:** Our mini homes are manufactured inside under climate controlled conditions, built to CSA Standards.
- 2. Supreme Strength & Endurance:** Our unitized floor system is 5/8" T & G "Stabledge" engineered sheathing screwed and glued to the floor joists.
- 3. Supreme Energy Efficiency:** Supreme Mini Homes have an excellent energy efficiency with R-24 friction fit glass fibre insulation in our exterior walls and R-32 blown in glass fibre insulation in the roof.
- 4. Supreme Sealed for Customer Comfort:** Our windows are airtight, single hung white PVC thermo sealed with tilt action, Low E Argon and come with HALF "Georgian" grills.







Our Supreme Homes Mini Home interiors exude elegance and style. We have left no stone unturned when it comes to the development and final design of each and every one of our exquisite interiors. Our high standards of quality and our professional craftsmanship ensure that the interior of your Supreme Home fits into the lifestyle that you believe you deserve.

The Supreme Homes livingroom is one to be proud of. Unlike many mini home livingrooms, ours have been designed to allow you a sense space with roomy floor area in order to decorate it with plenty of furniture.

If you have a flair for the culinary arts, then you will love our kitchens. Some of our homes even come with their own pantry. Bright and easy to work in custom cooking areas make our kitchens every chefs delight.



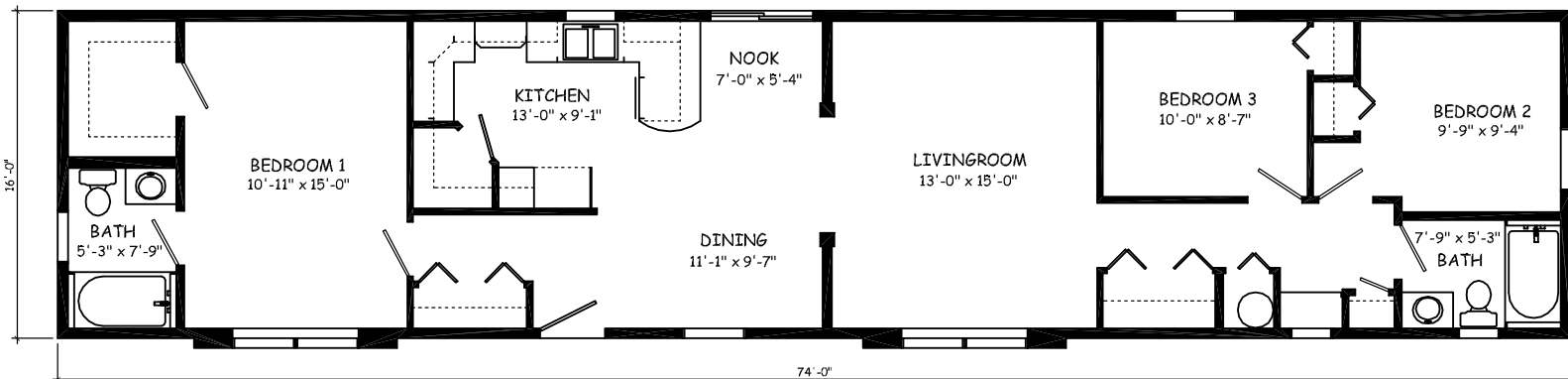
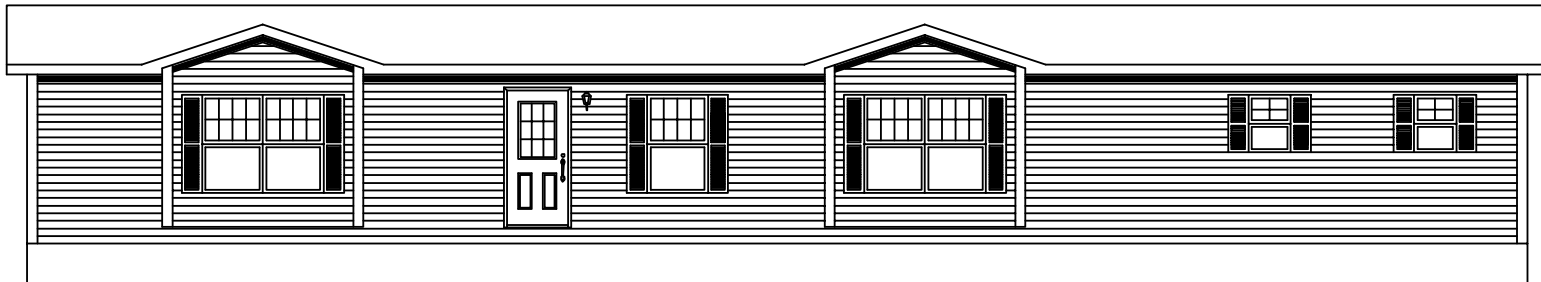
While many mini homes have cramped bathrooms, the Supreme Homes bathroom is spacious and bright with fixtures that are modern and functional.

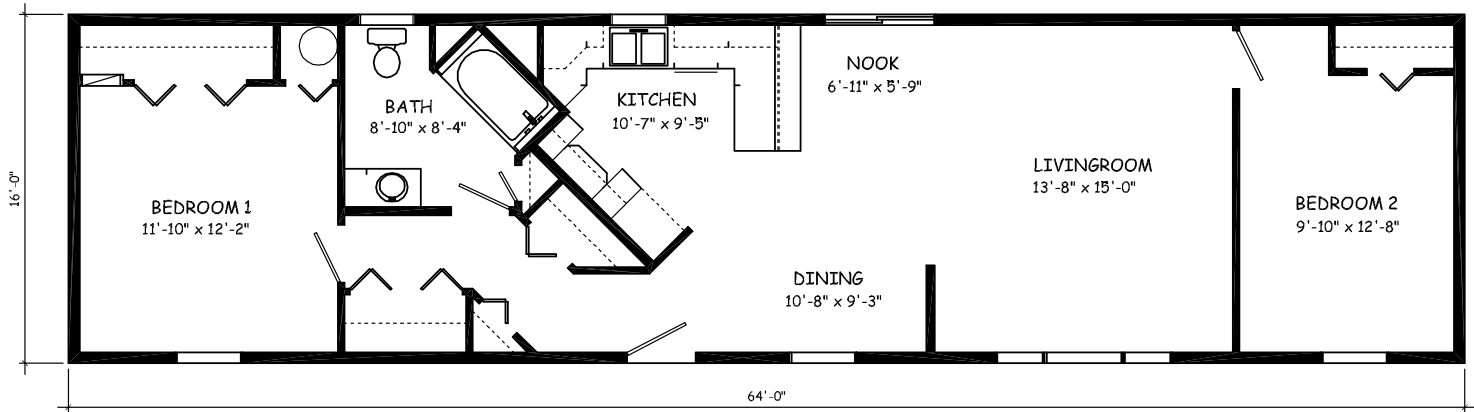
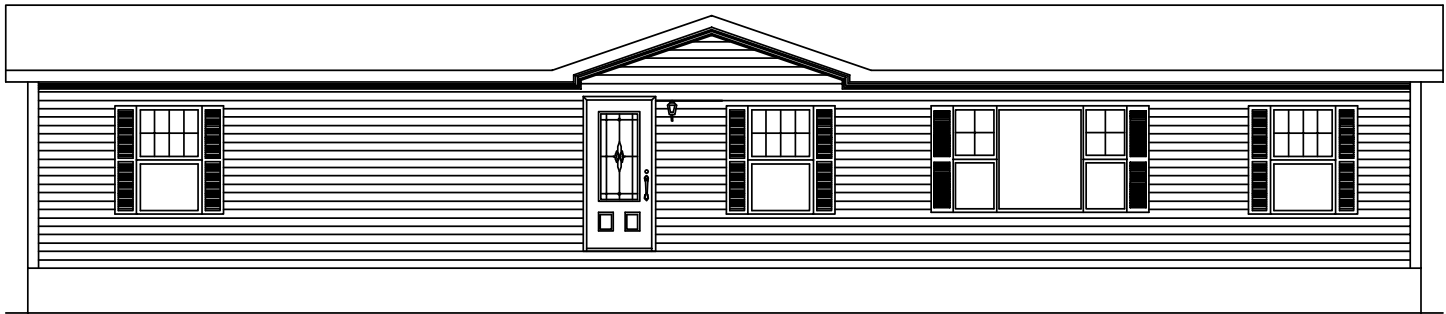
Our bedrooms have the stylish comfort that you are looking for in a home. With light fixtures that blend in nicely with the decor the bedroom of your dreams awaits you with long nights of restful sleep.





**FB01-1674**  
1184 SQ.FT.

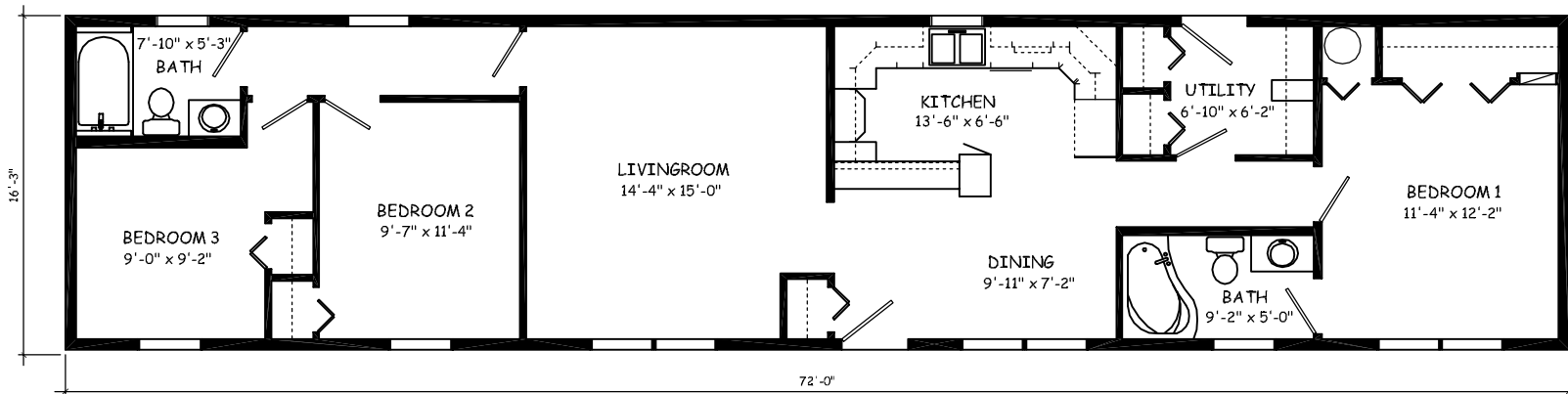
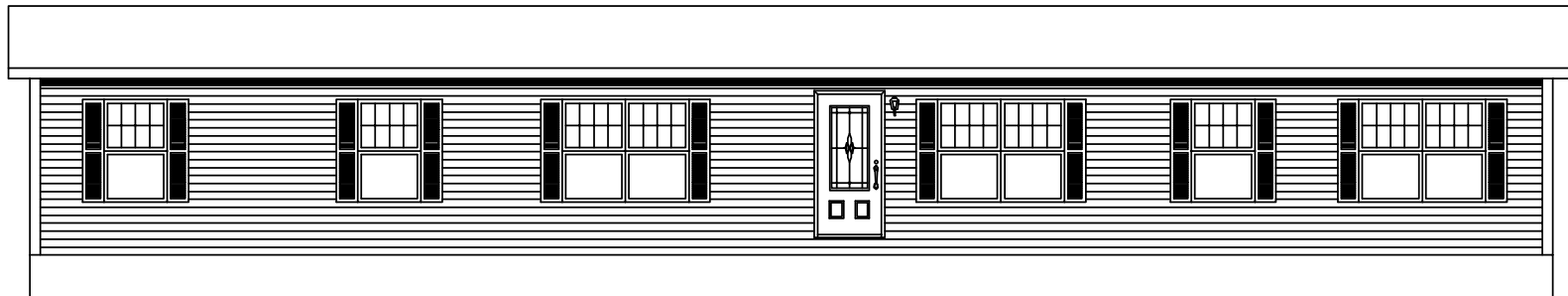


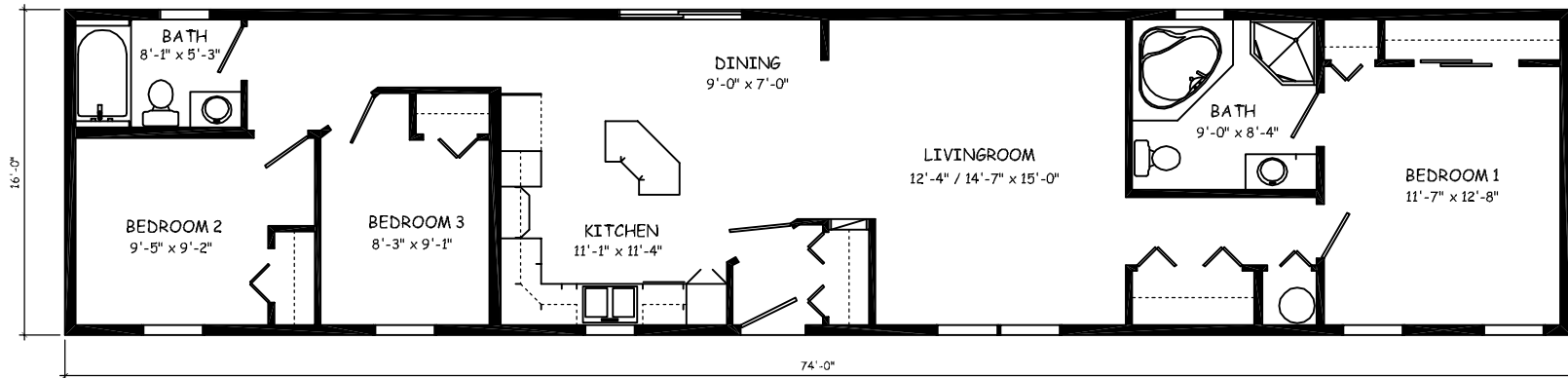
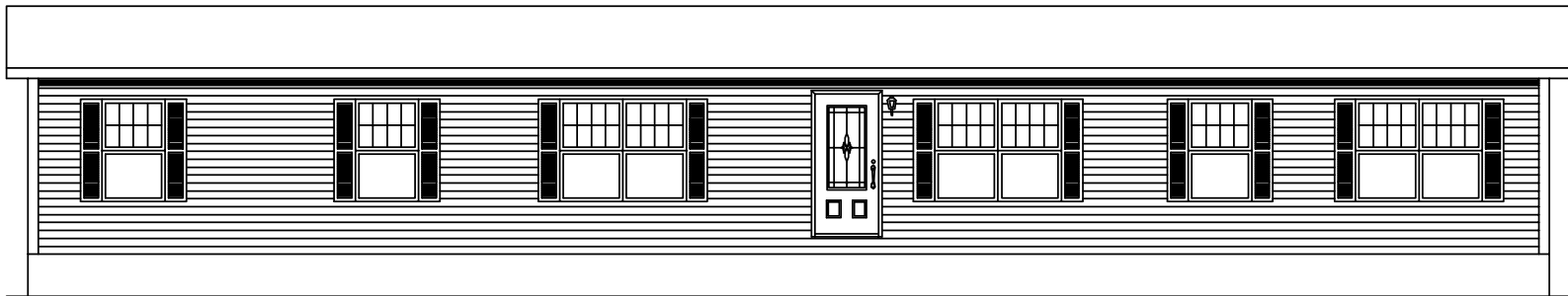


**FB02-1664**  
1024 SQ.FT.



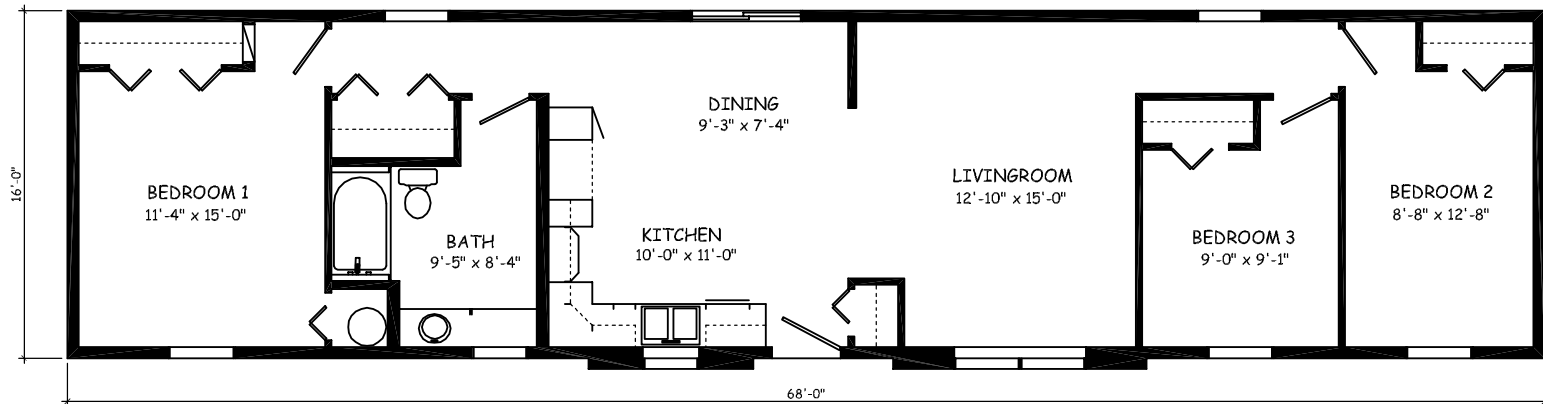
**FB03-1672**  
1152 SQ.FT.

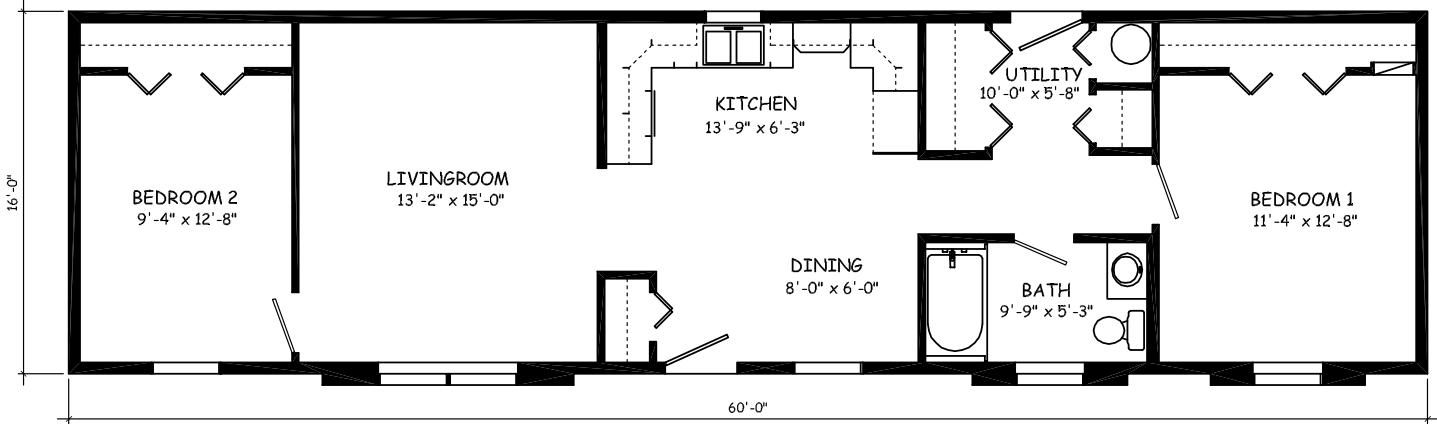
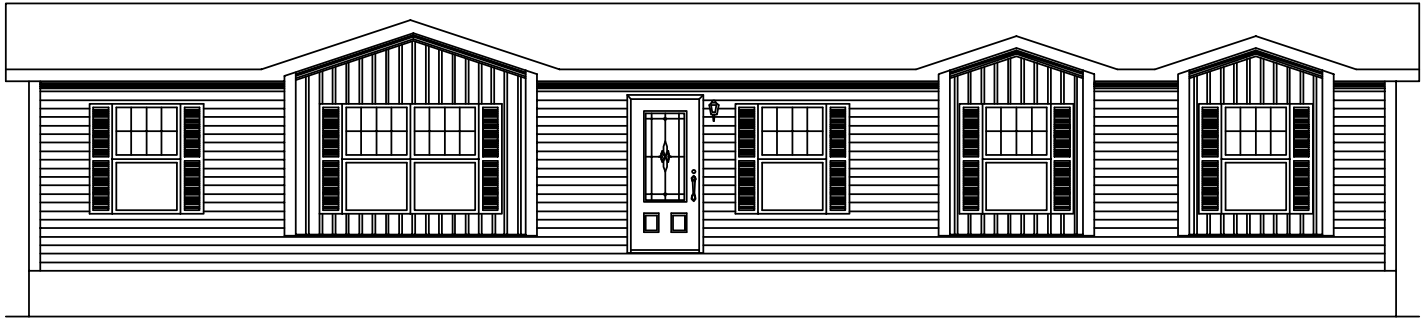




**FB05-1668**

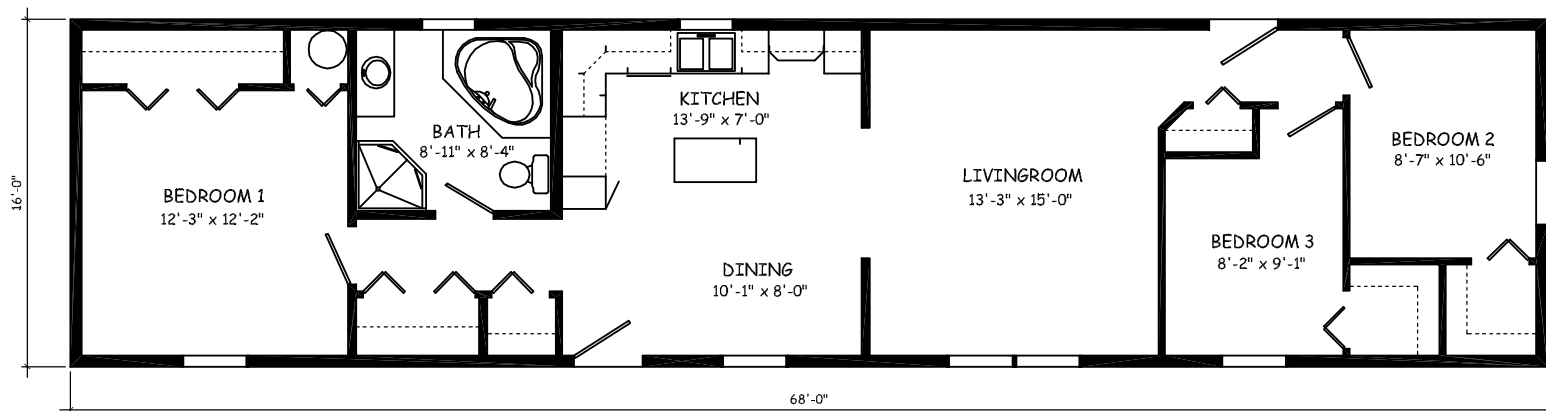
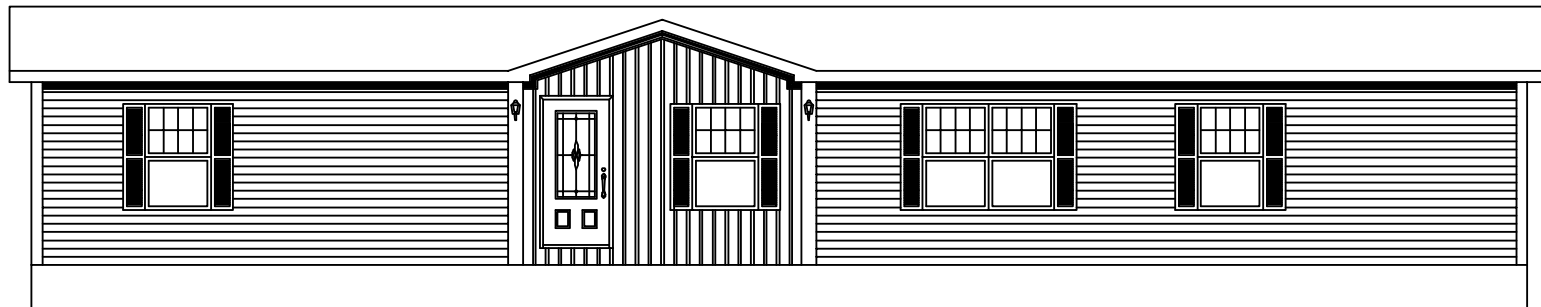
1088 SQ.FT.

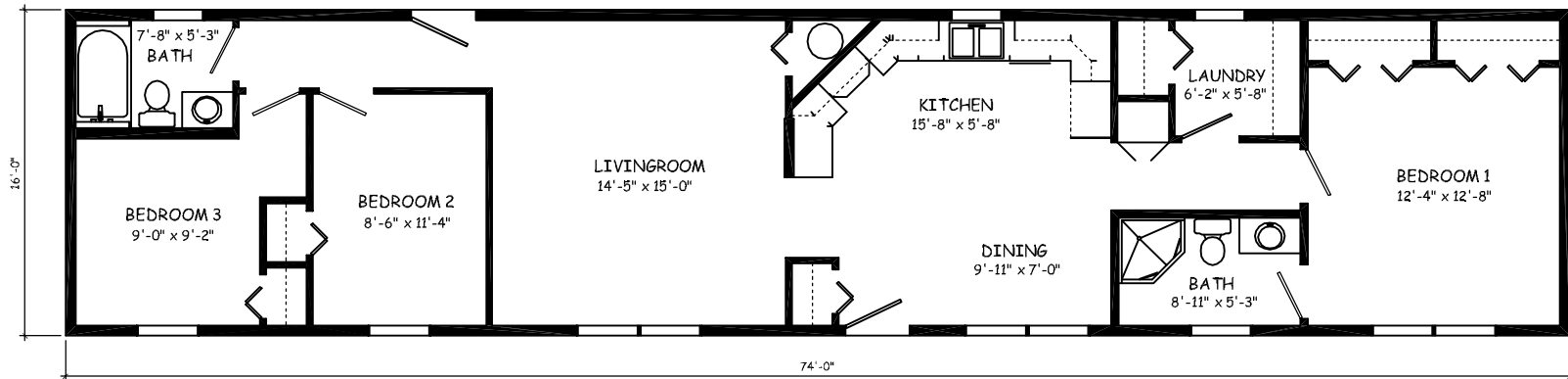




**FB07-1668**

1088 SQ.FT.

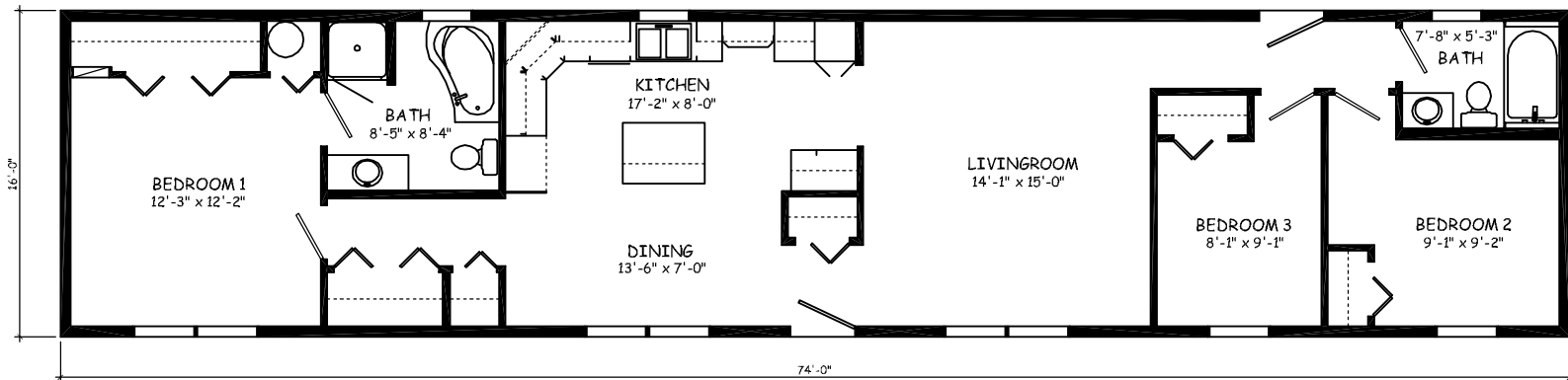


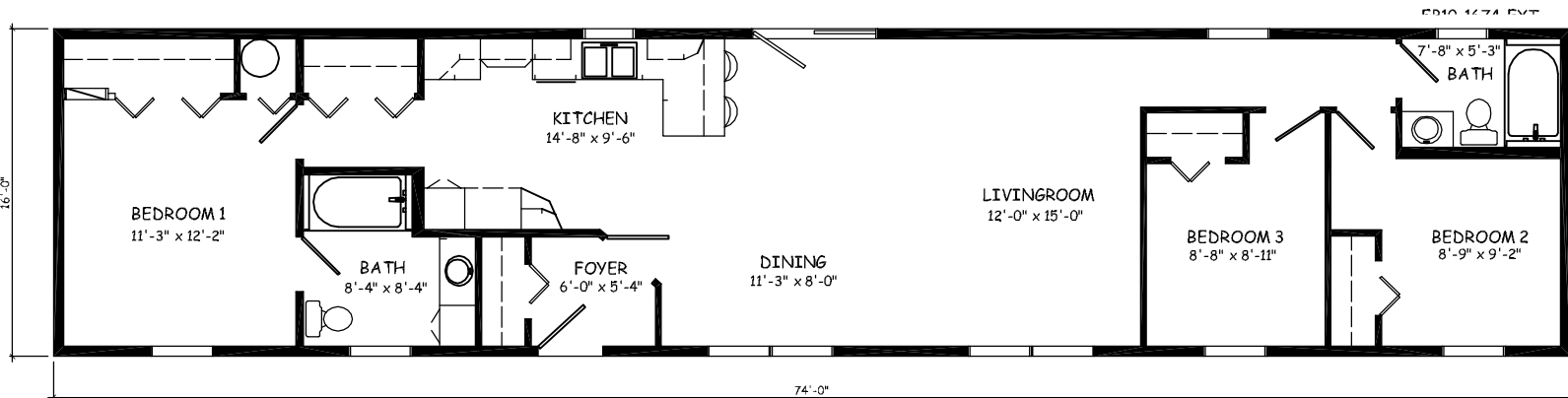


**FB08-1674**  
1184 SQ.FT.



**FB09-1674**  
1184 SQ.FT.

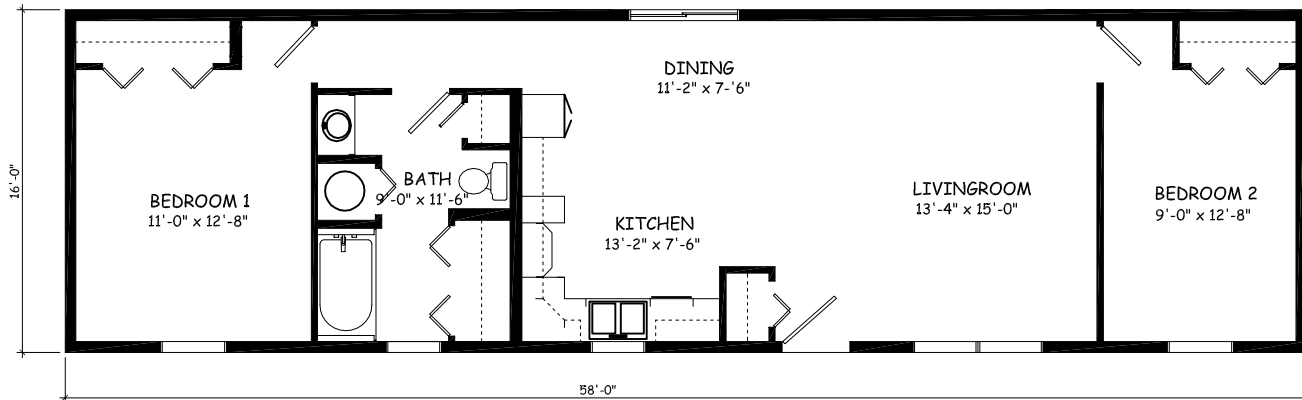


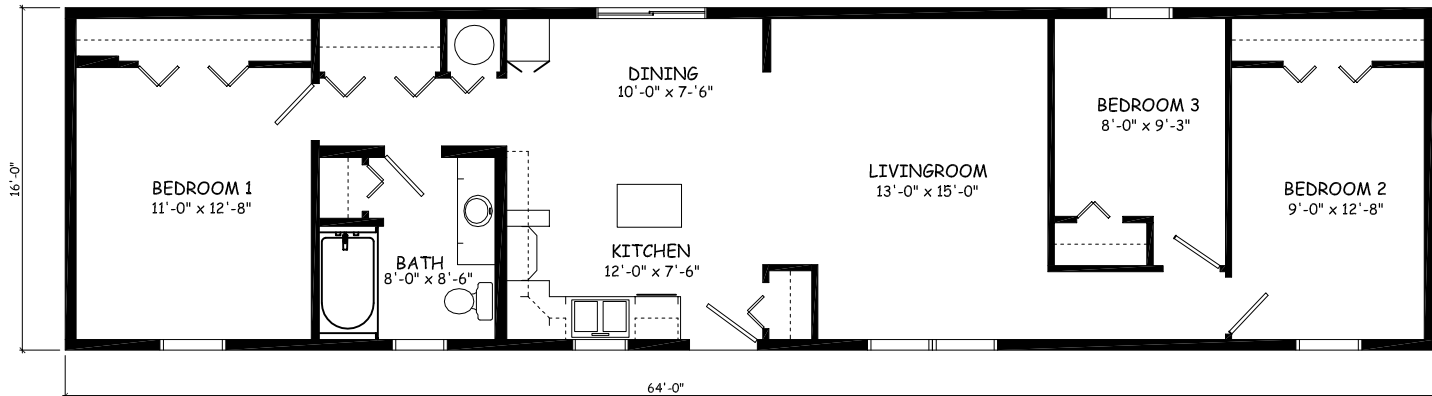
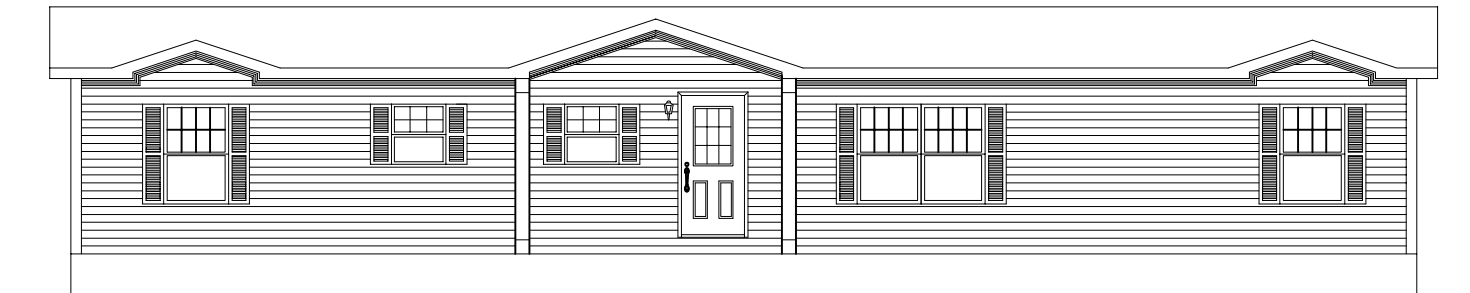


**FB10-1674**  
1184 SQ.FT.



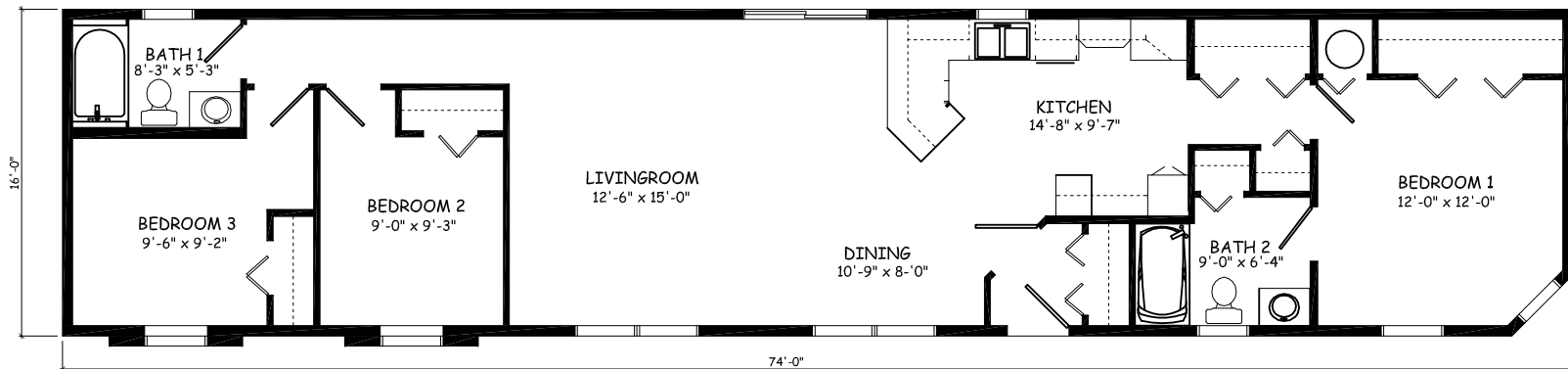
**FB11-1658**  
928 SQ.FT.

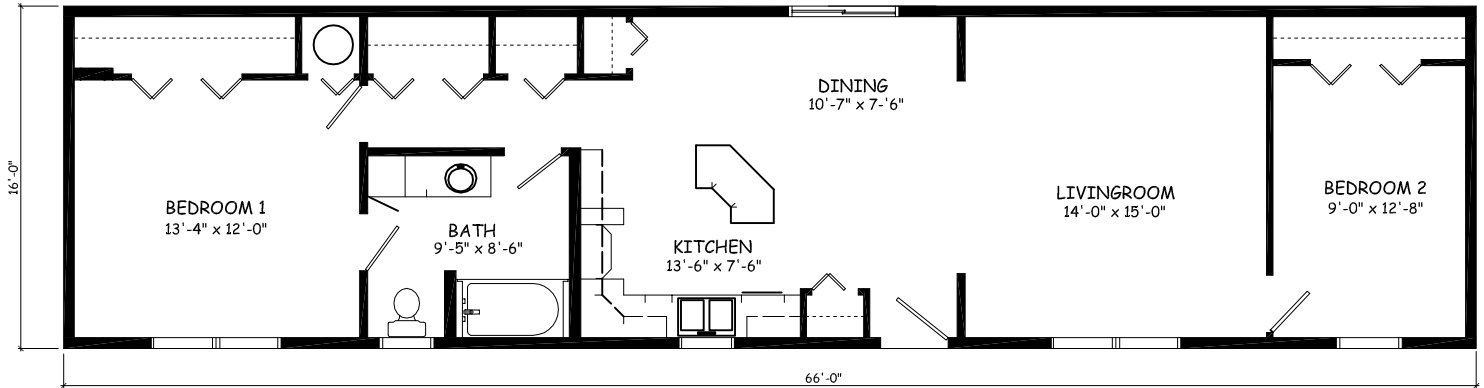
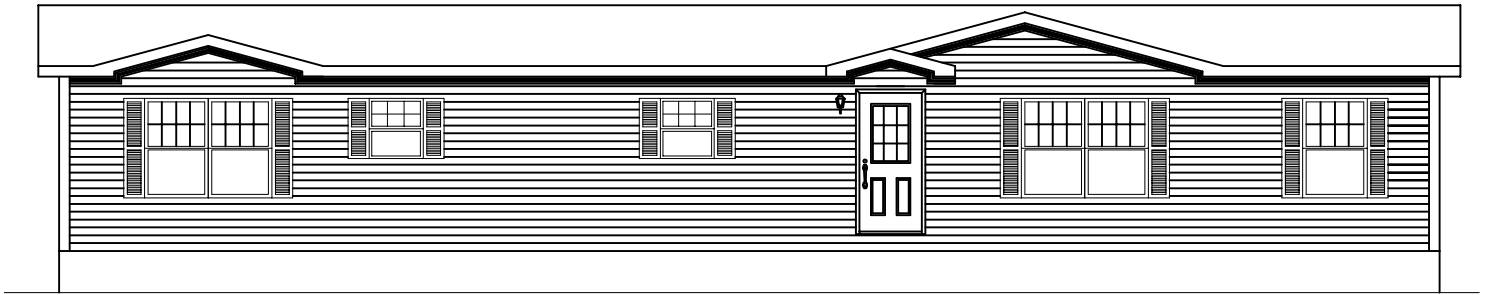






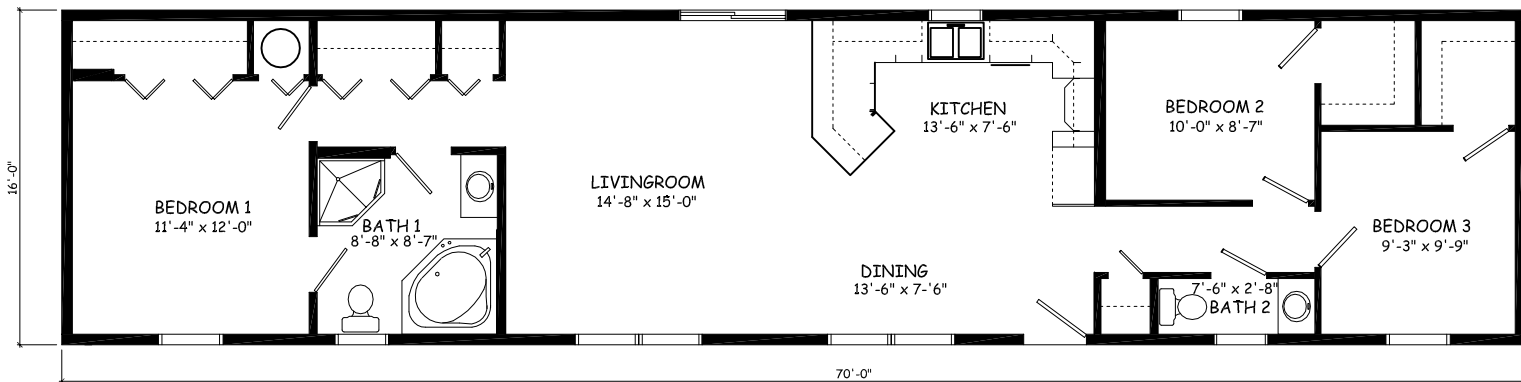
**FB13-1674**  
1184 SQ.FT.

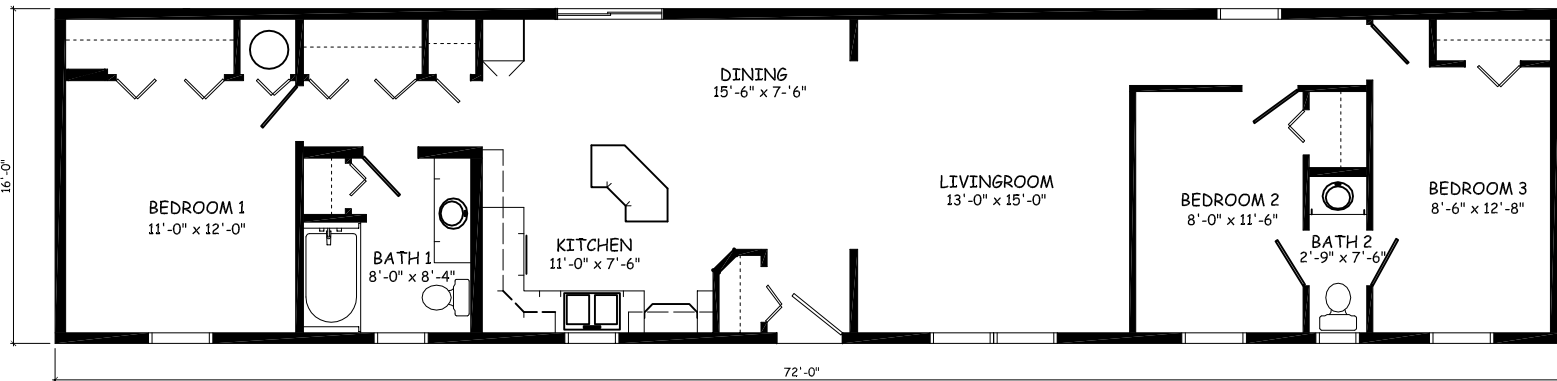
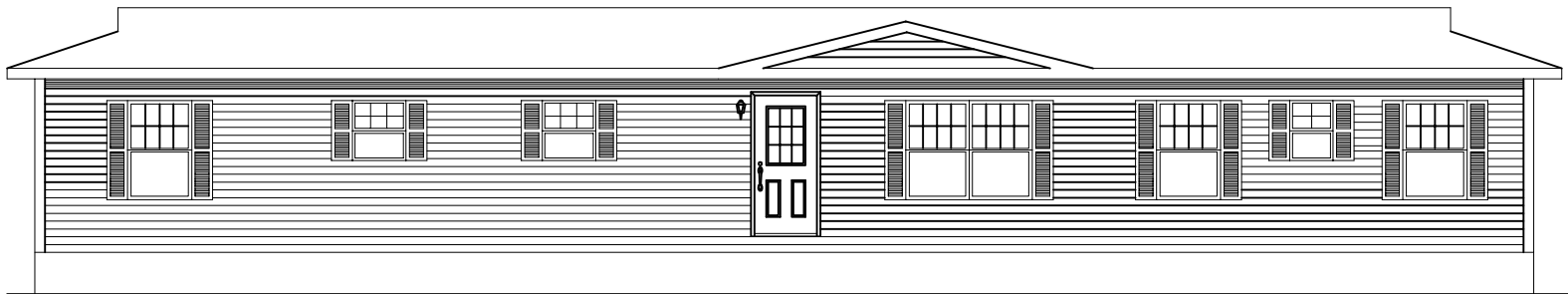






**FB15-1670**  
1020 SQ.FT.

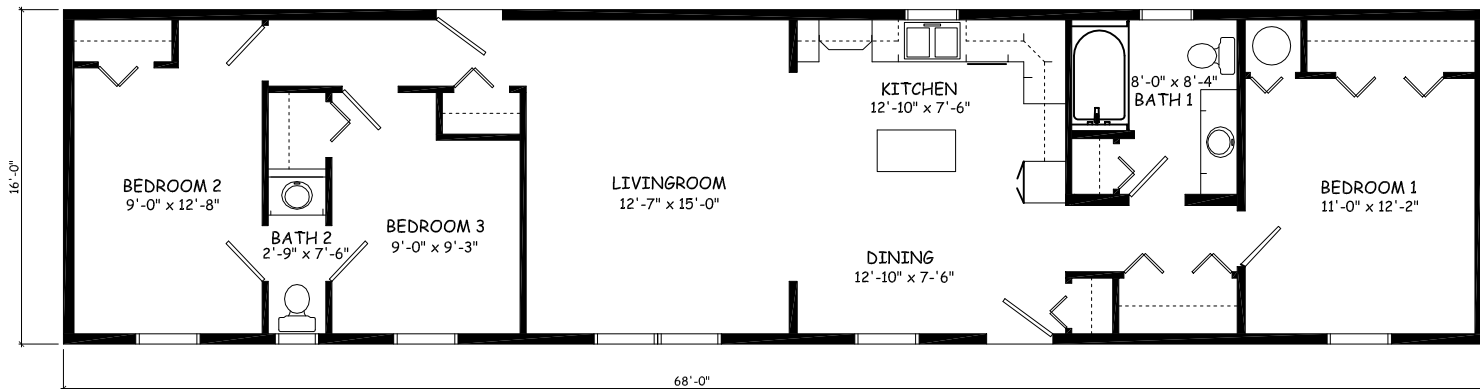
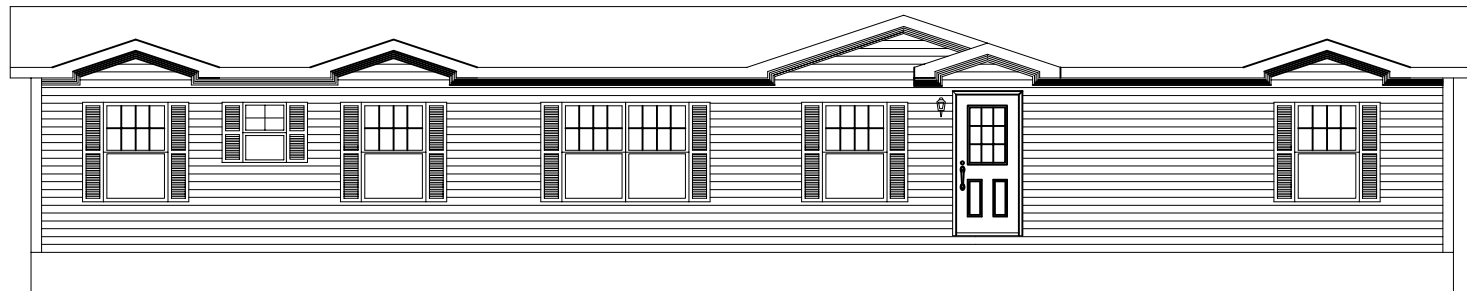


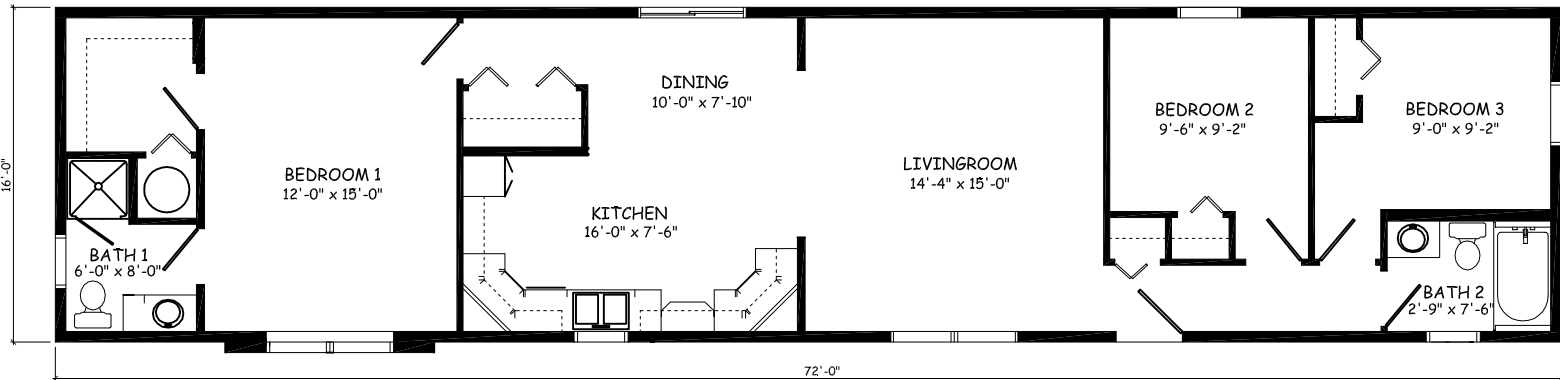
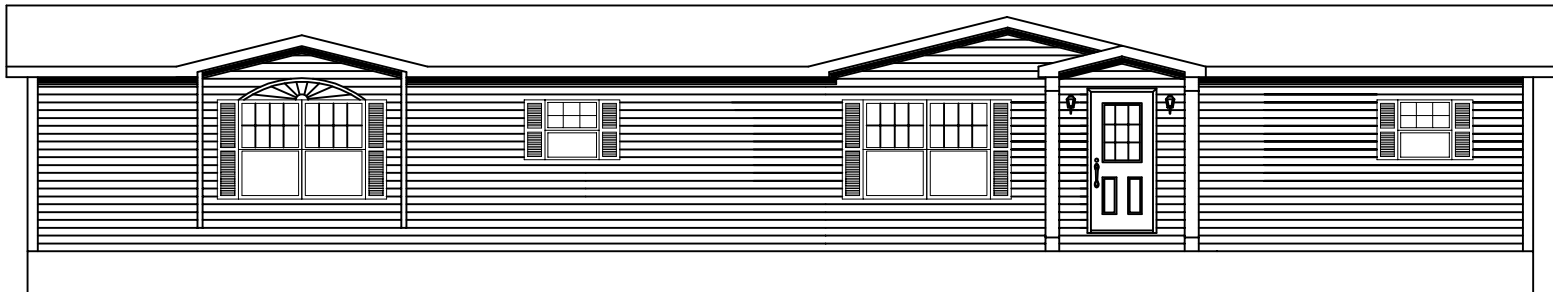


**FB16-1672**  
1152 SQ.FT.

**FB17-1668**

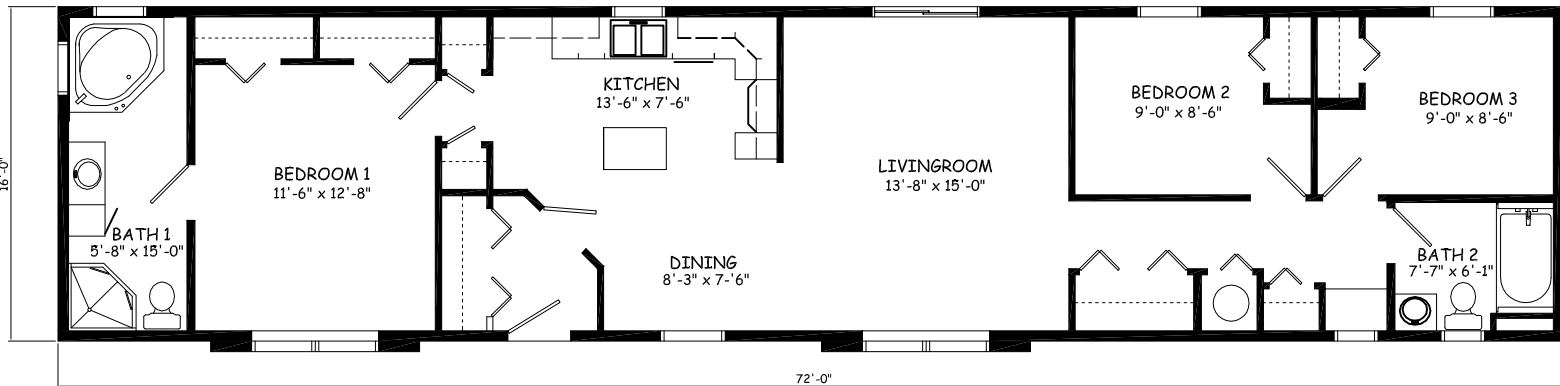
1088 SQ.FT.

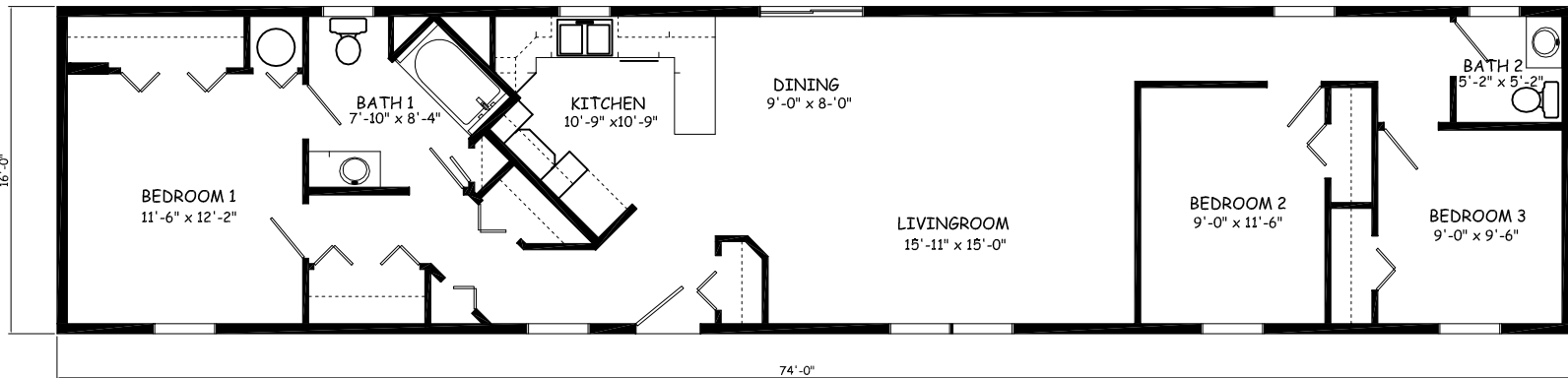
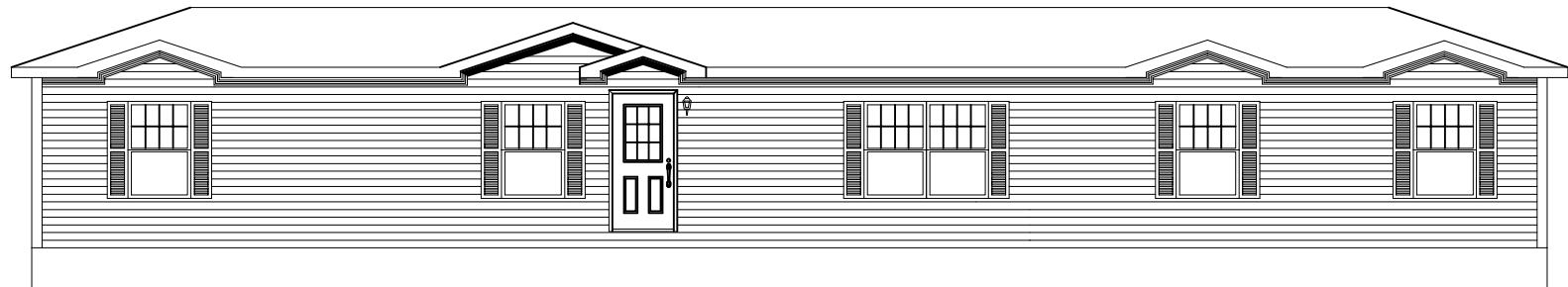






**FB19-1672**  
1152 SQ.FT.

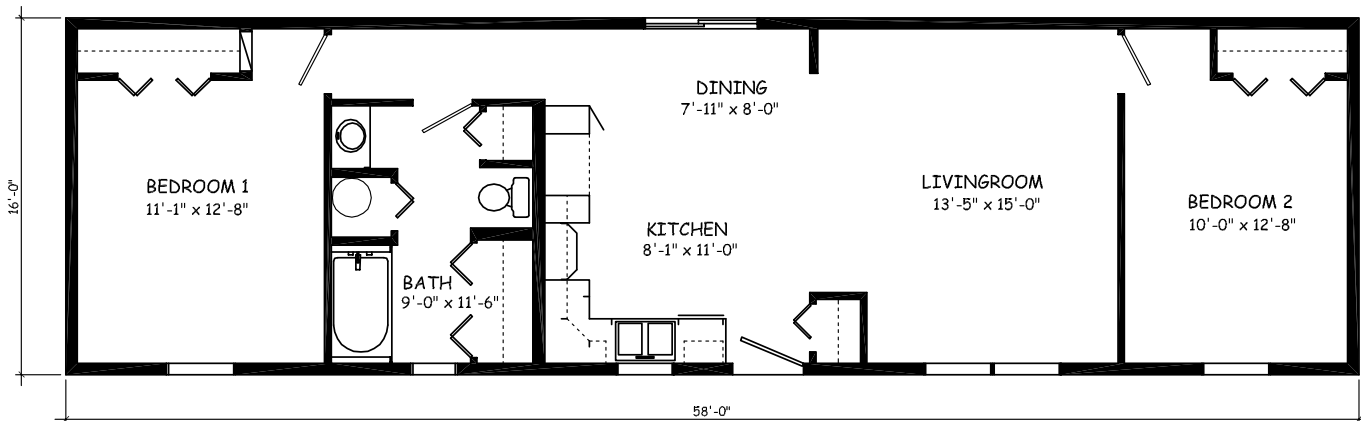
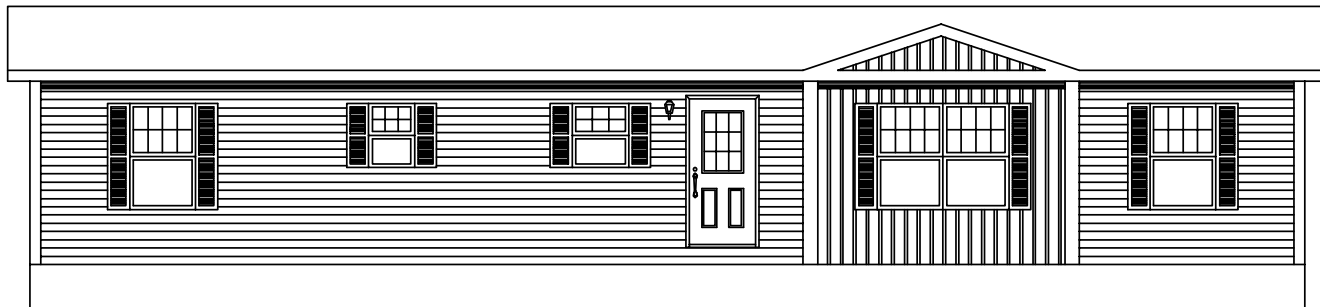


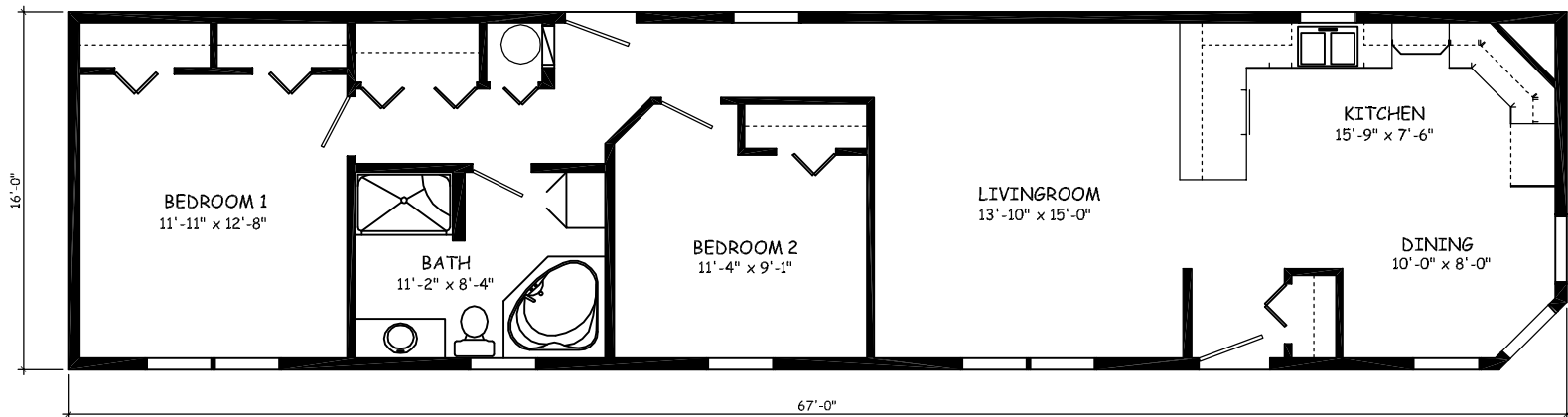
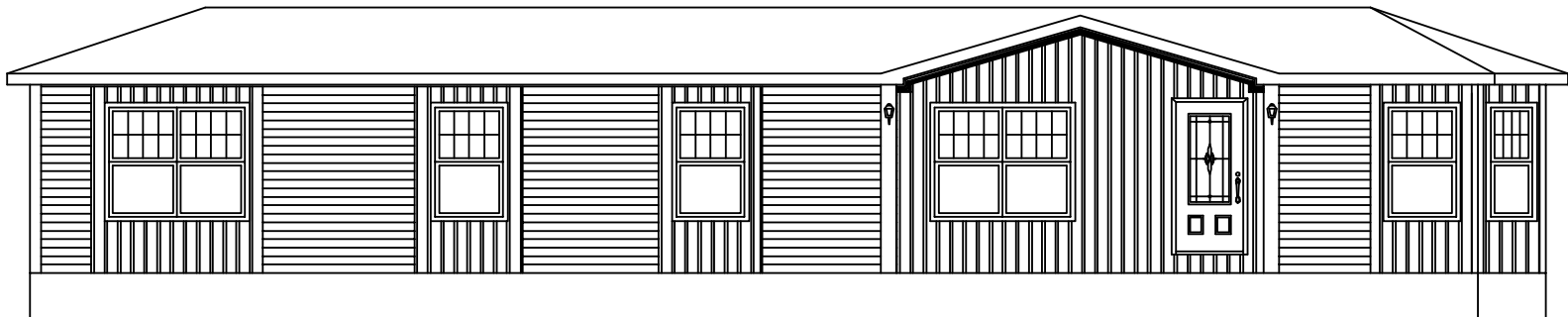


**FB20-1674**  
1184 SQ.FT.



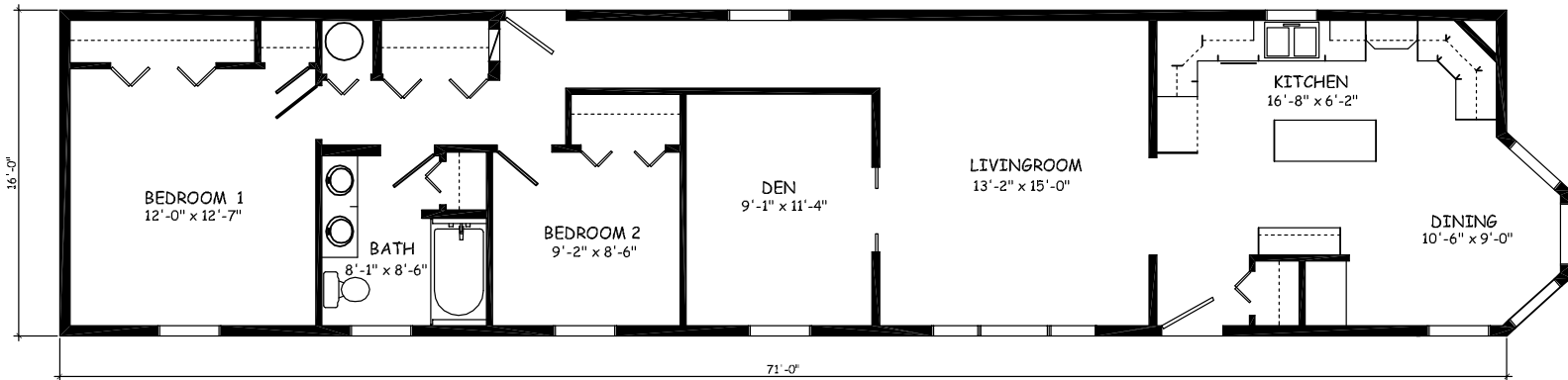
**FB21-1658**  
928 SQ.FT.

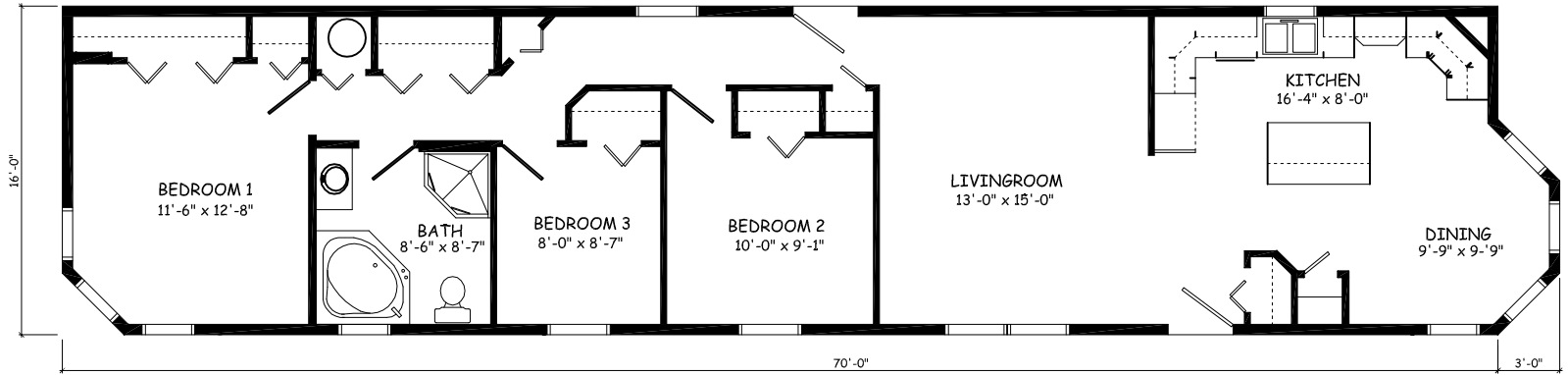
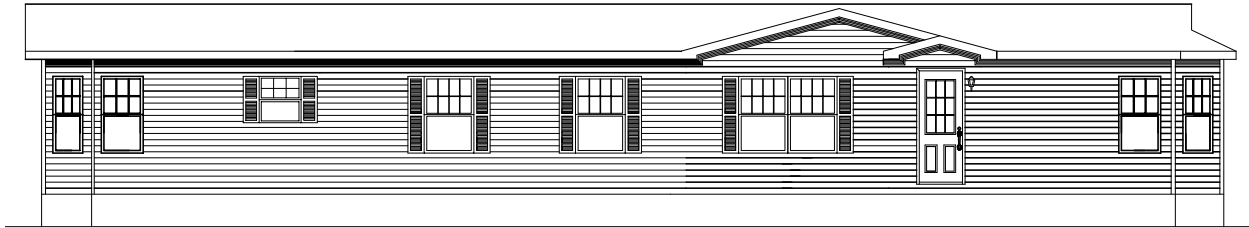






**FK02-1674**  
1158 SQ.FT.

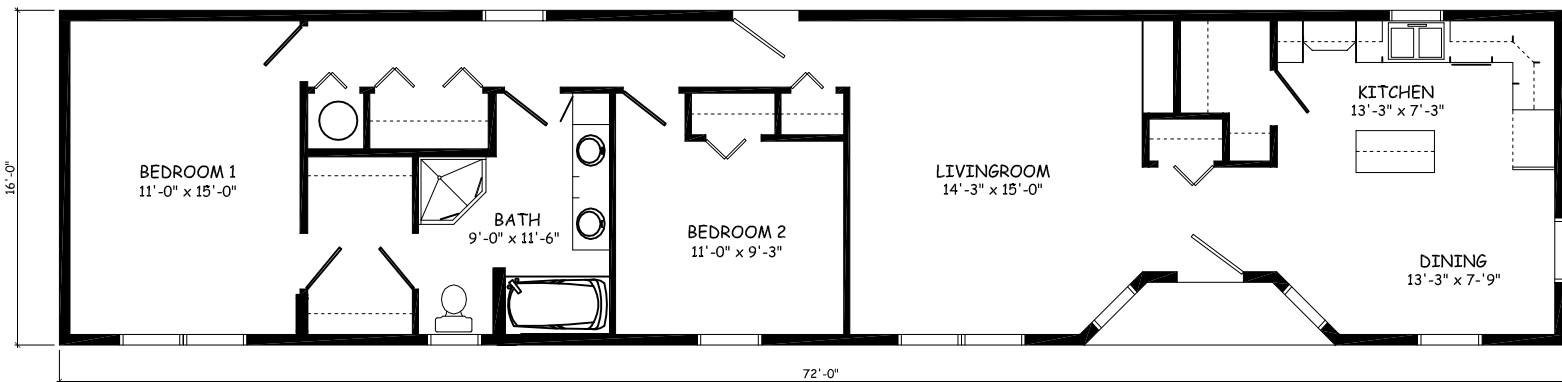
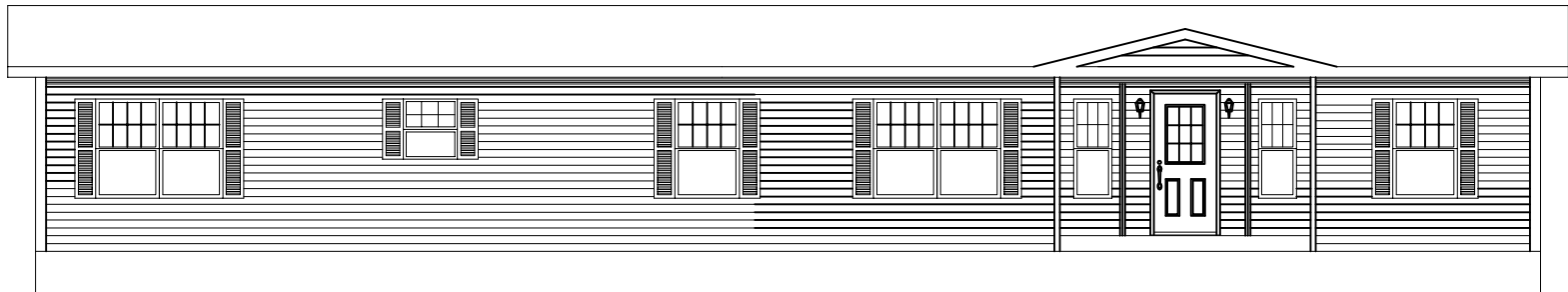


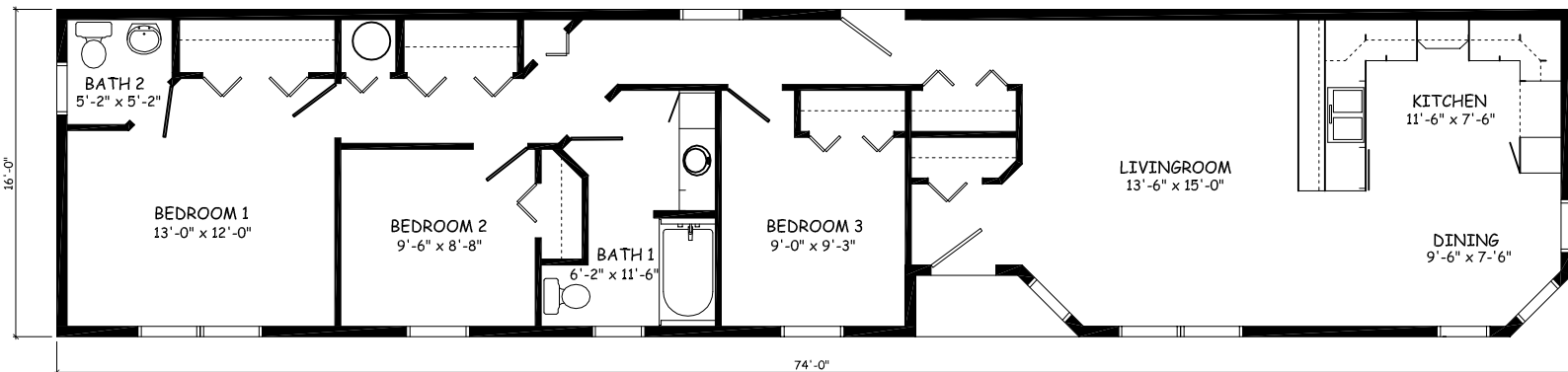


**FK11-1670**  
1120 SQ.FT.



**FK12-1672**  
1152 SQ.FT.

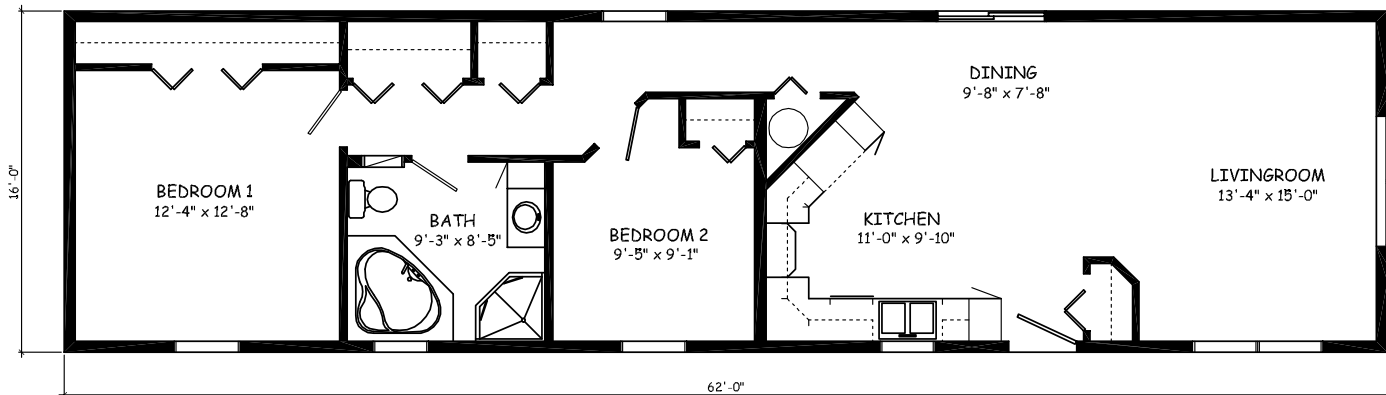
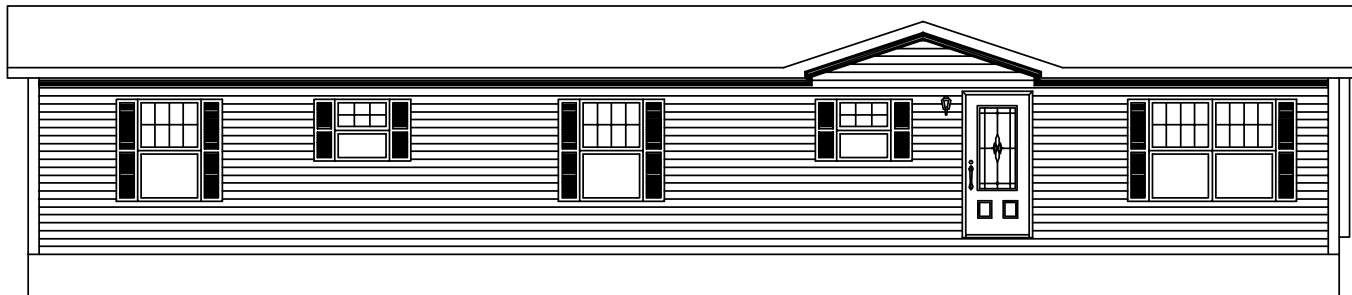


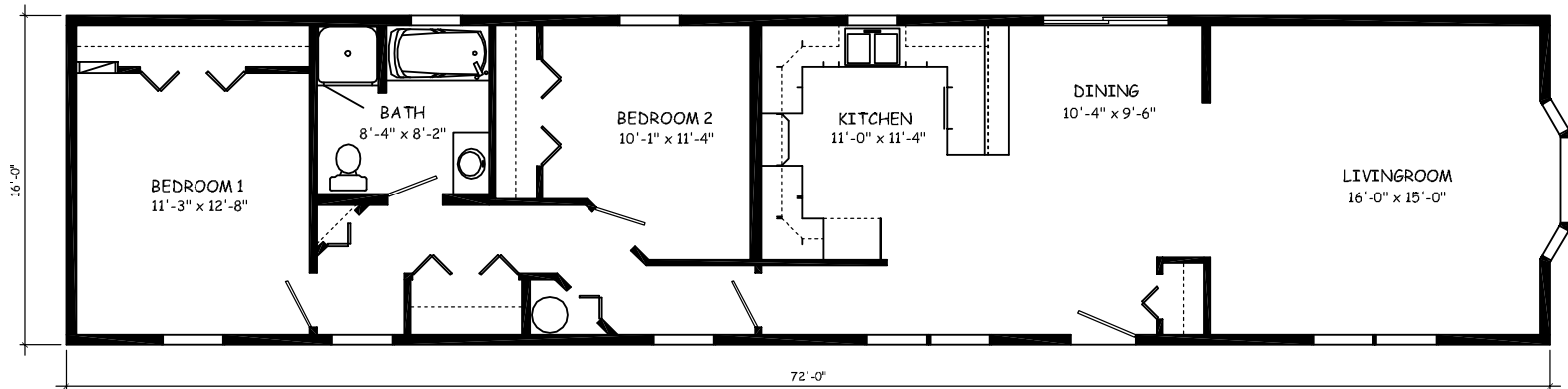
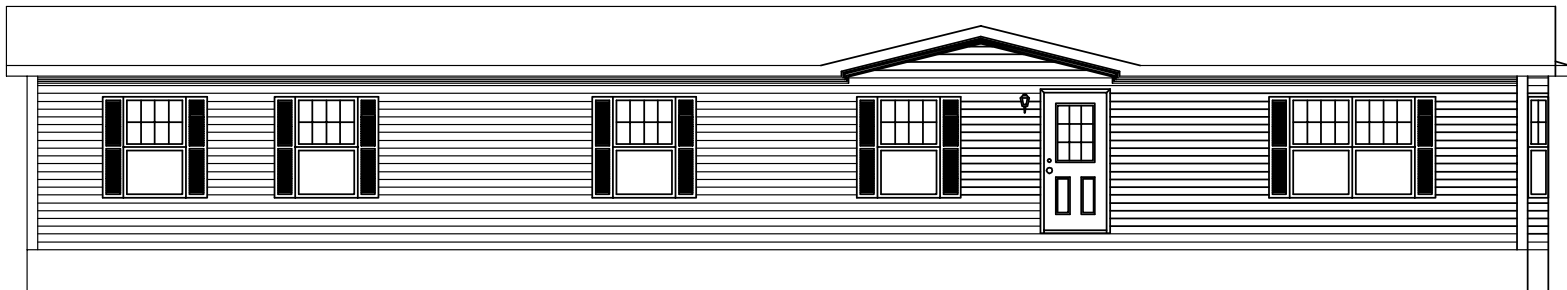


**FK13-1674**  
1184 SQ.FT.



**FL01-1662**  
992 SQ.FT.

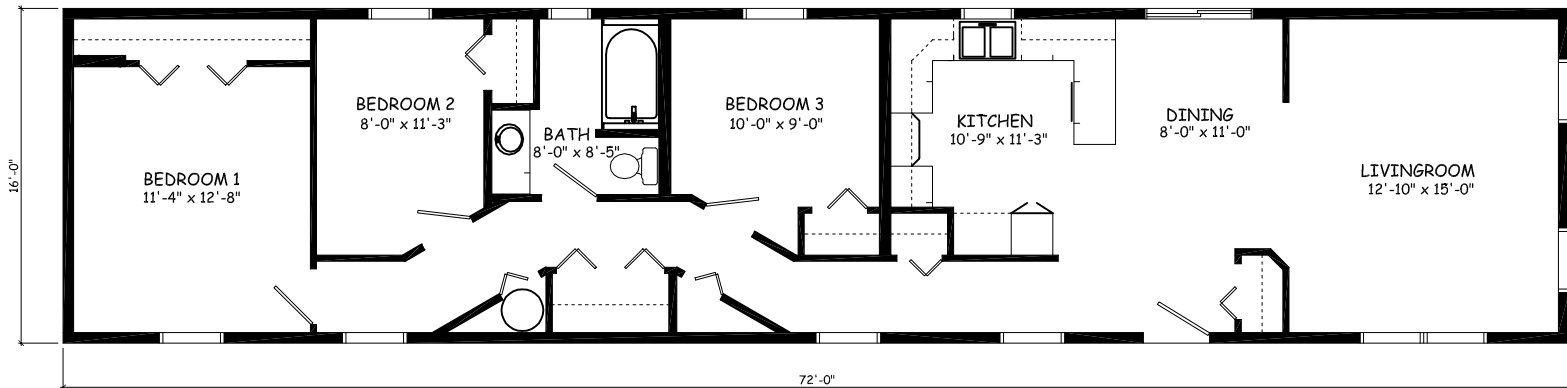
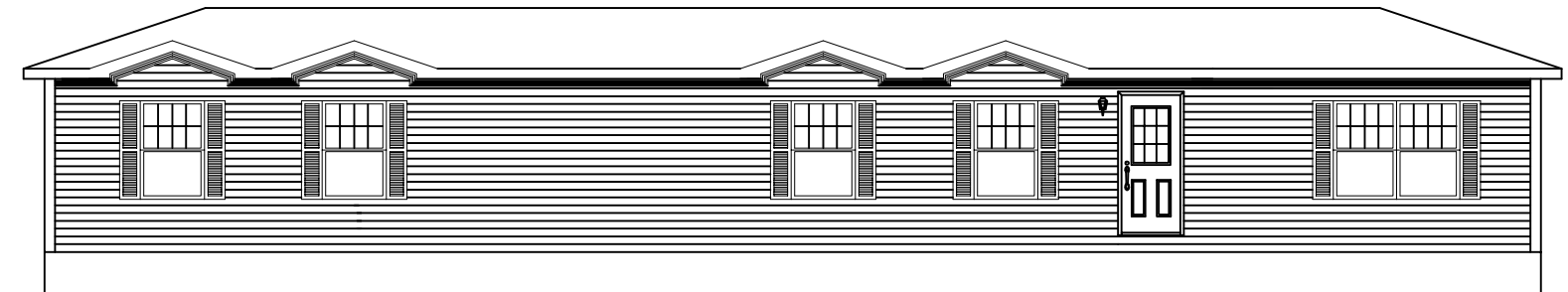


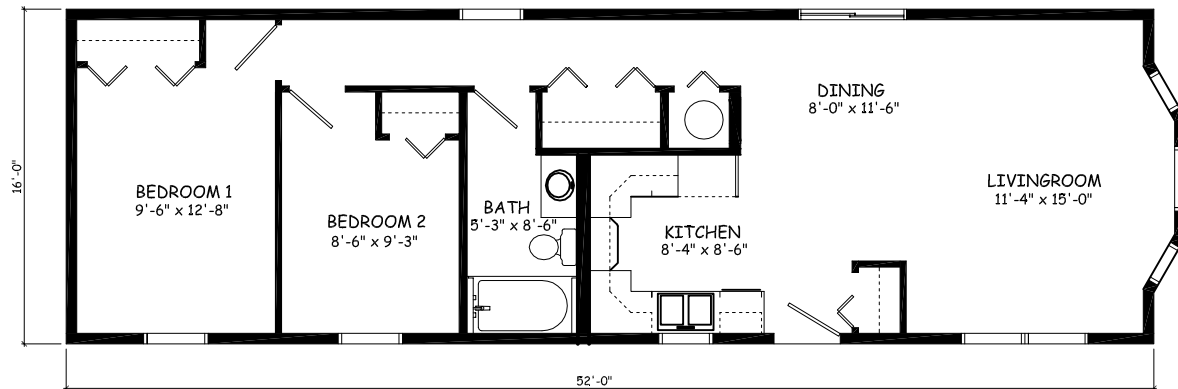
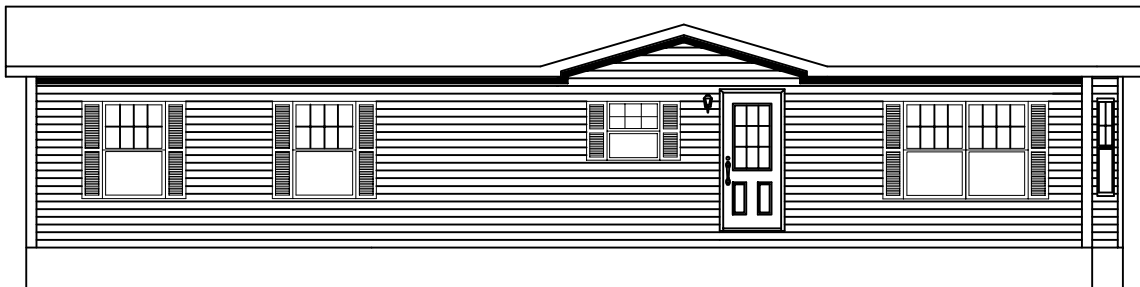


**FL03-1672**  
1152 SQ.FT.



**FL11-1672**  
1152 SQ.FT.

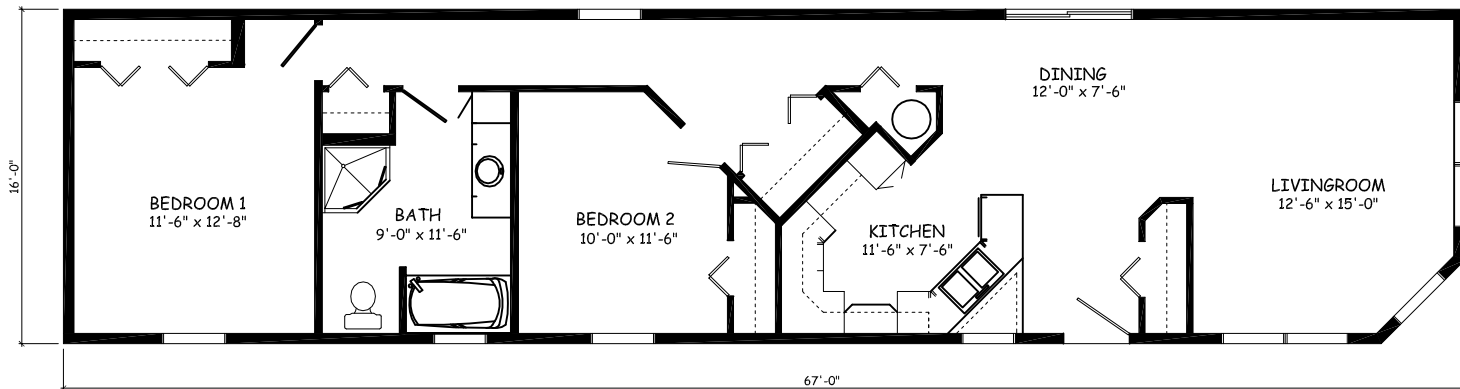
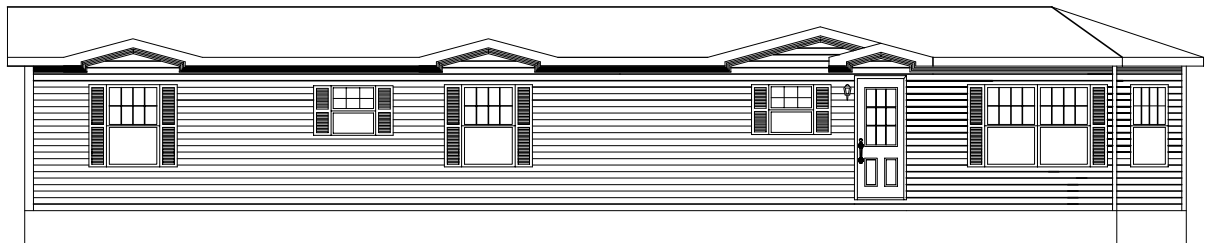


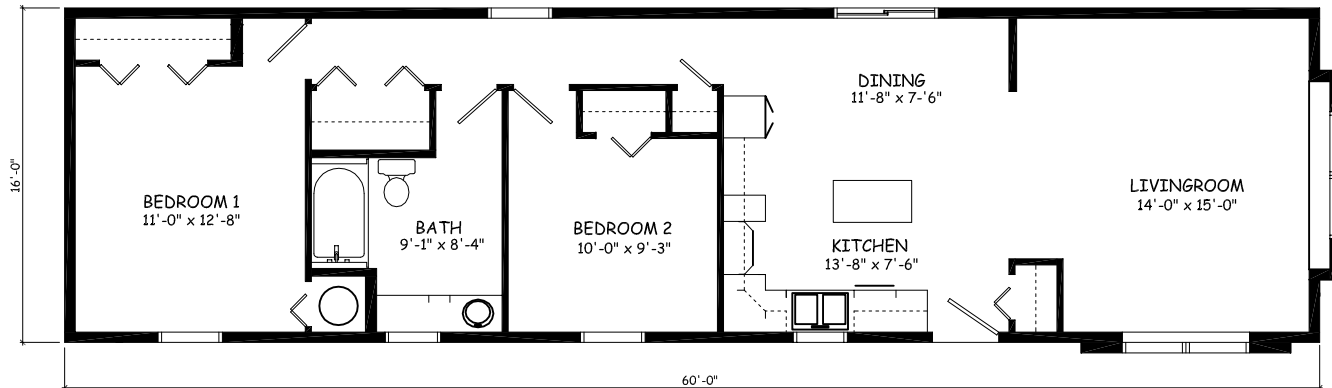
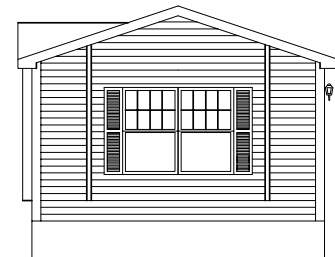


**FL12-1652**  
832 SQ.FT.



**FL13-1667**  
1072 SQ.FT.

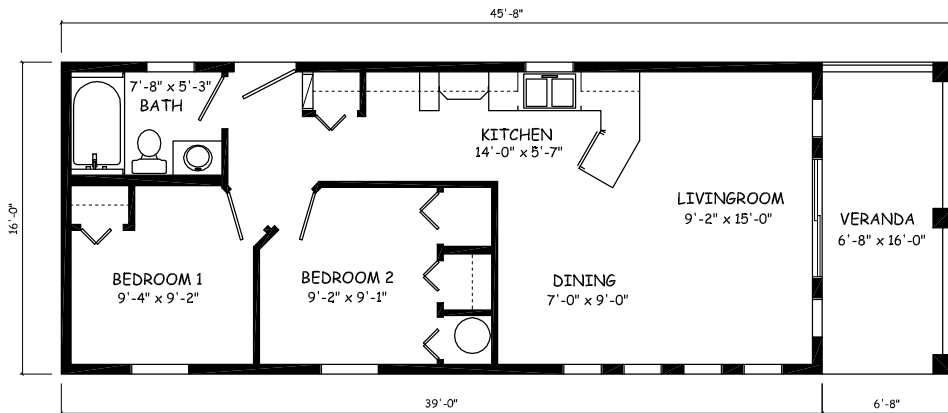
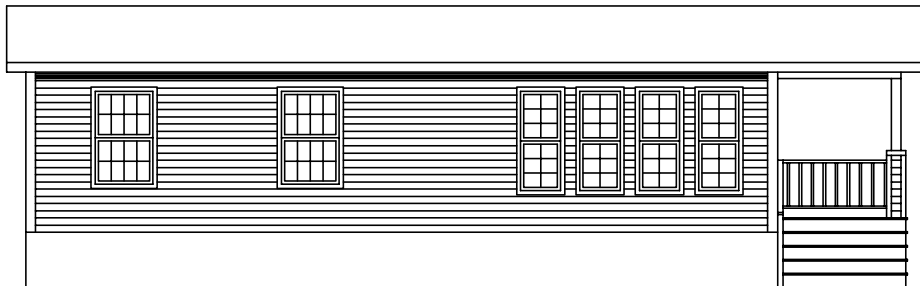


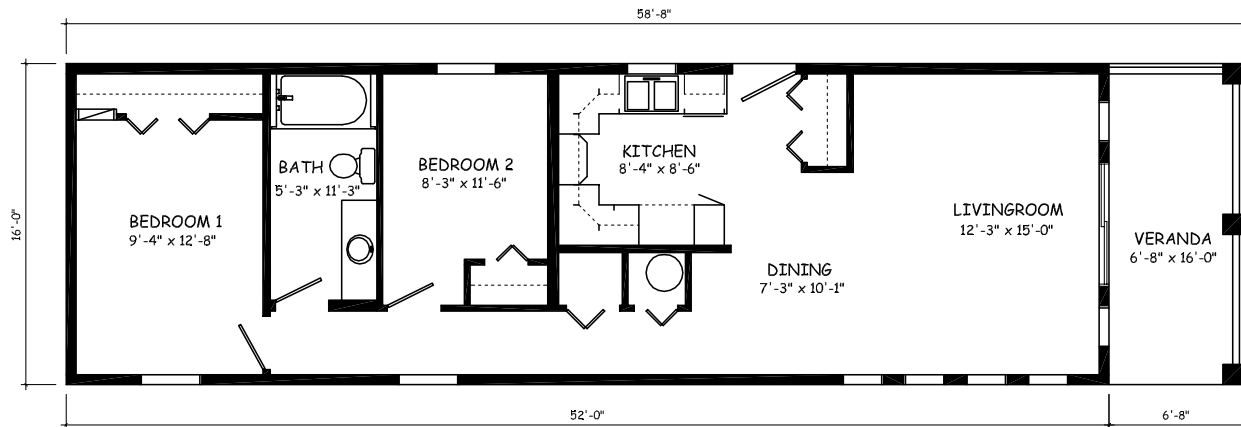
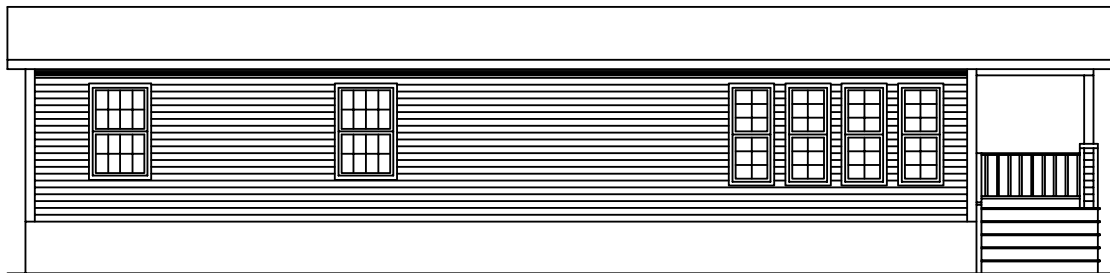


**FL14-1660**  
960 SQ.FT.



**FP01-1645**  
624 SQ.FT.

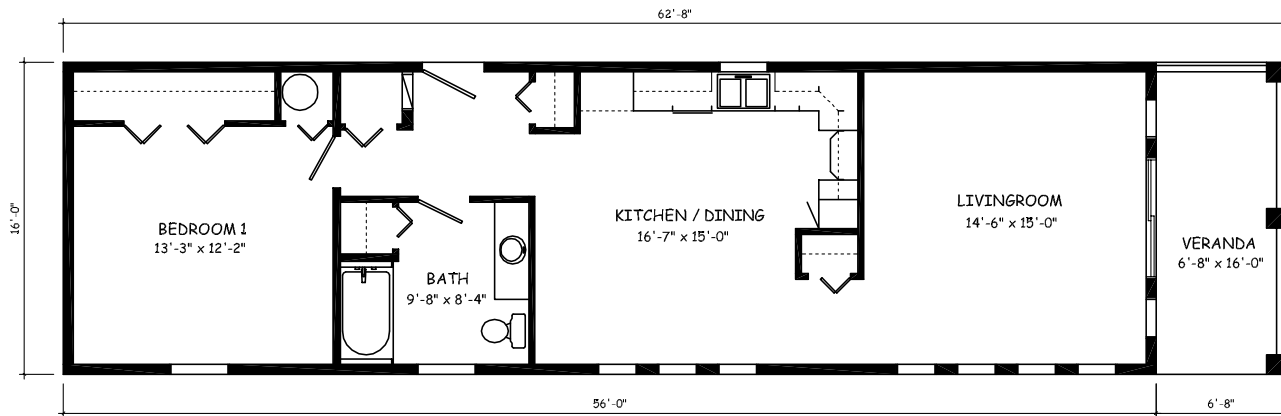
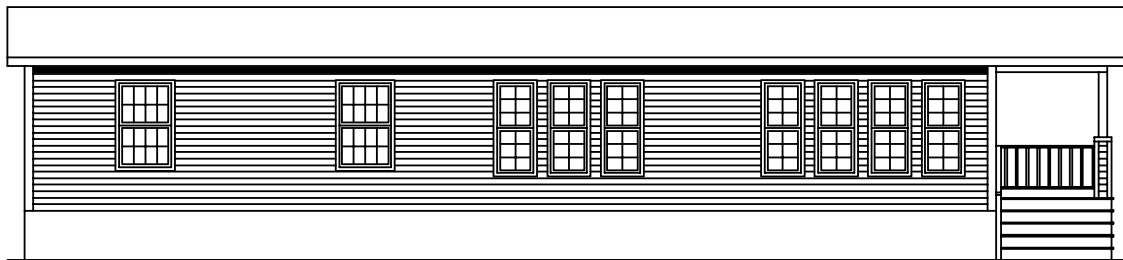


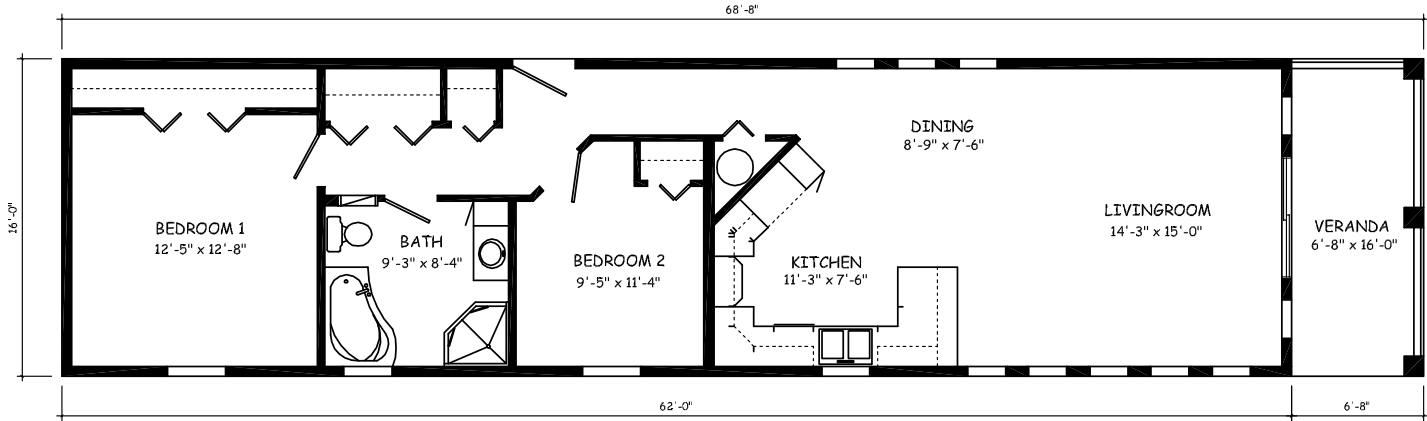
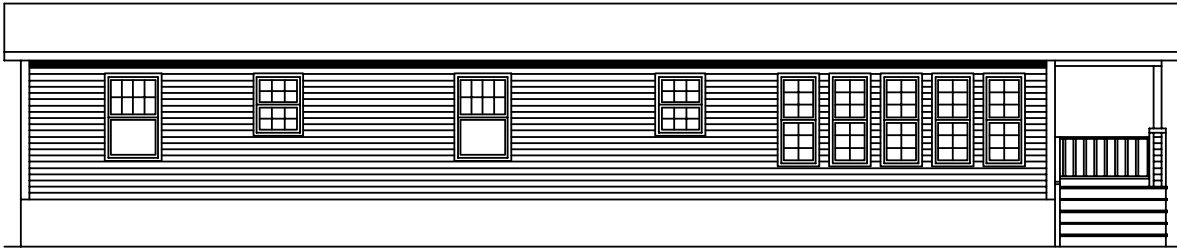


**FP02-1658**  
832 SQ.FT.

**FP03-1662**

896 SQ.FT.

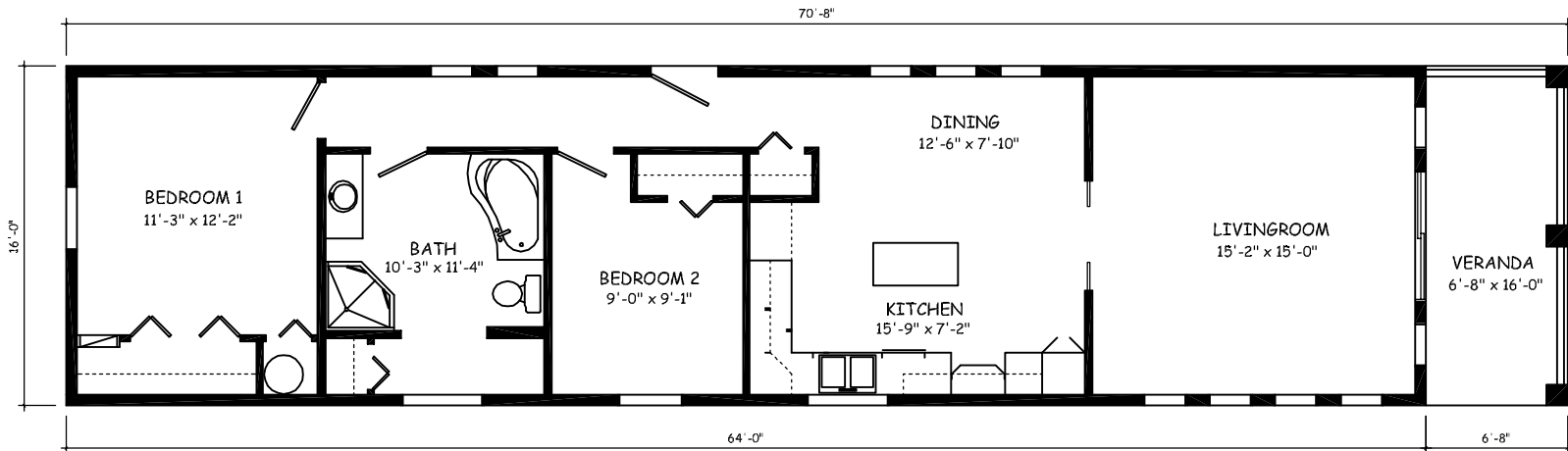
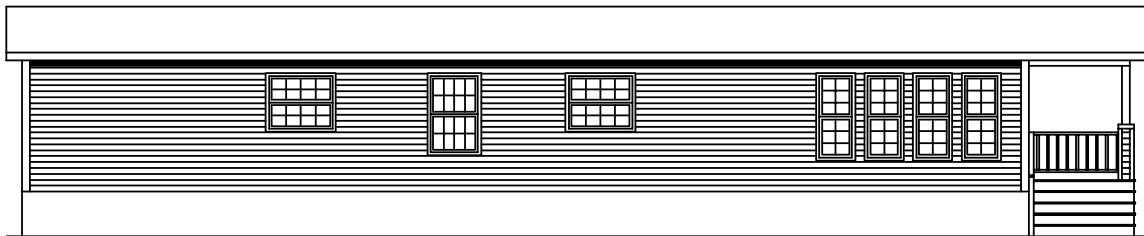


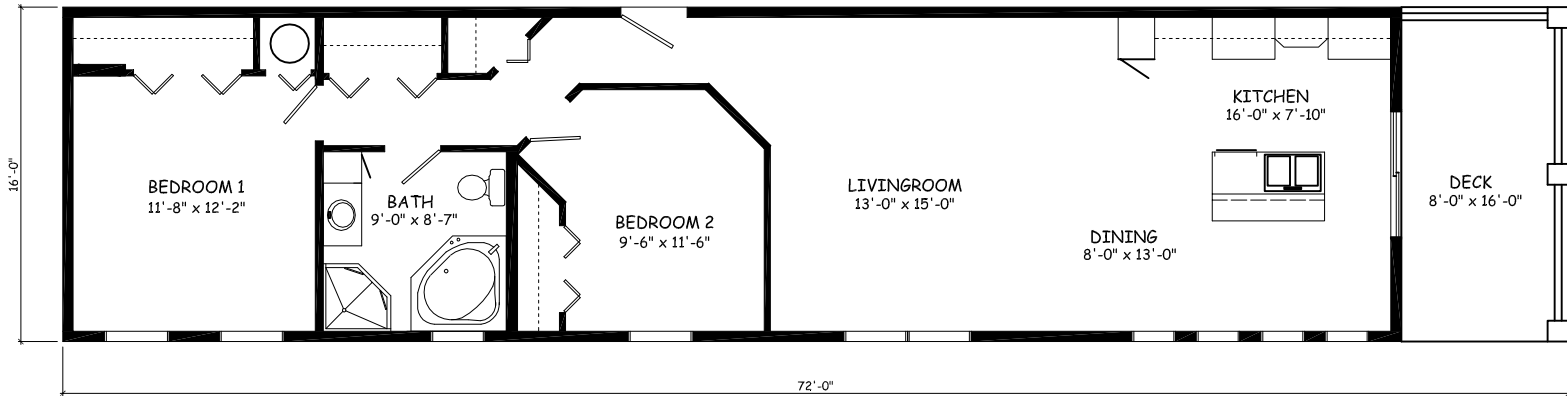
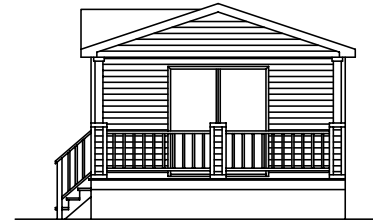


**FP04-1668**  
992 SQ.FT.



**FP05-1670**  
1024 SQ.FT.

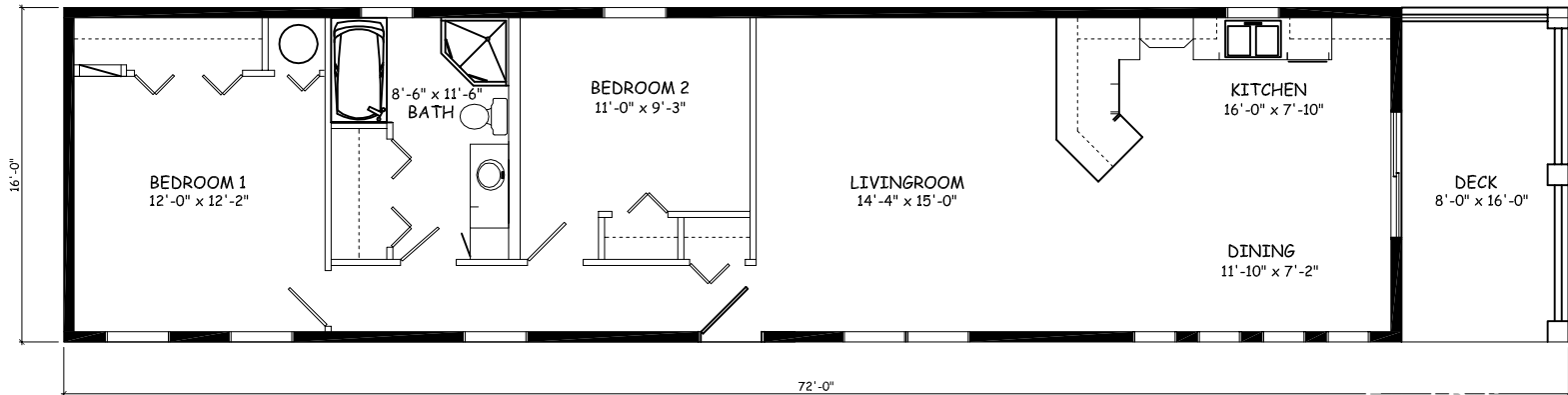
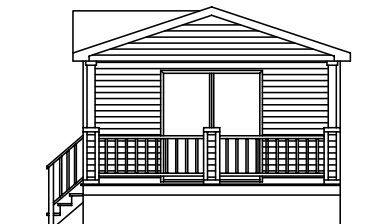
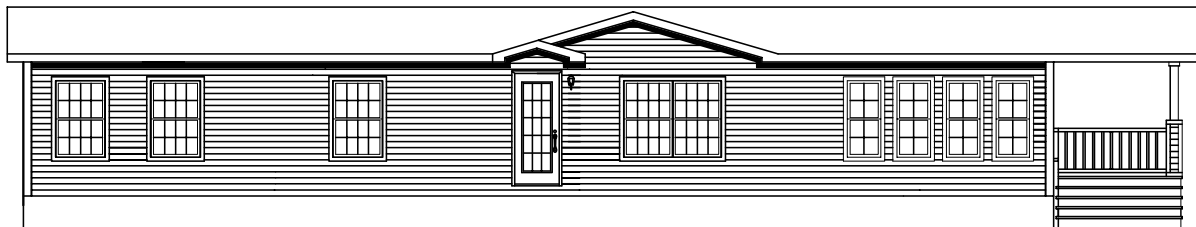


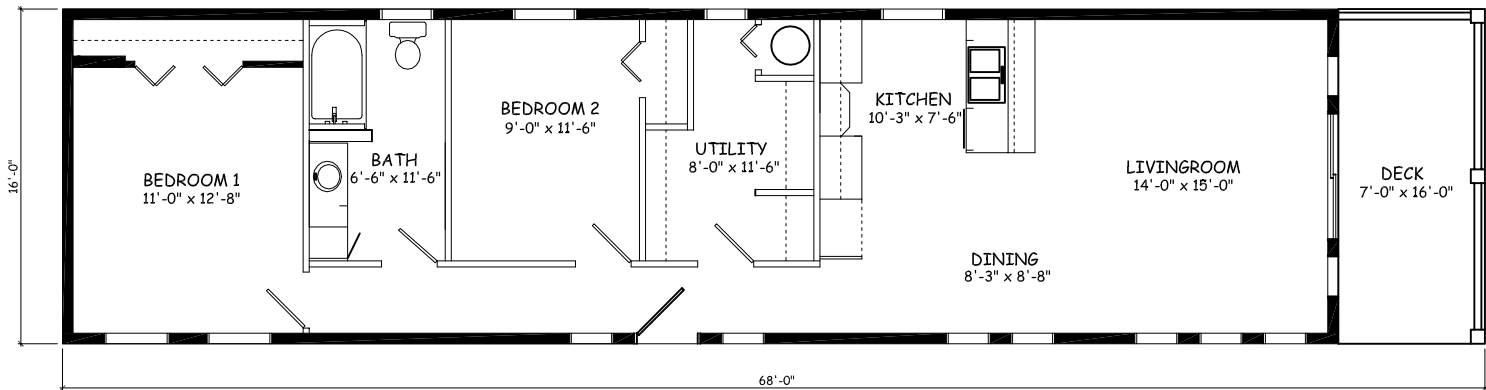
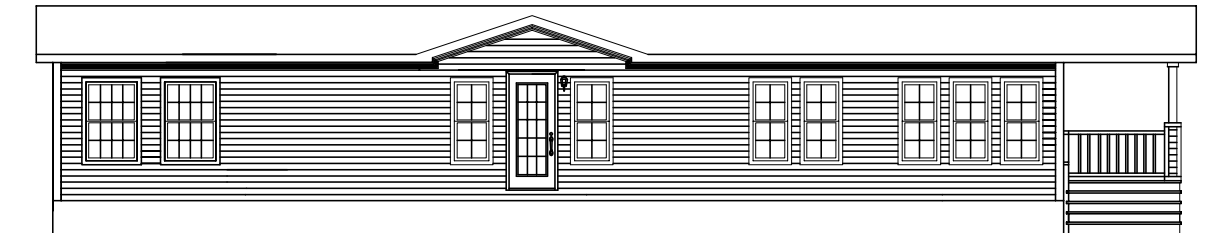


**FP11-1672**  
1152 SQ.FT.



**FP12-1672**  
1152 SQ.FT.





**FP13-1668**  
1088 SQ.FT.

Retailer for Supreme Homes:



SUPREME HOMES

THE COMFORT SOLUTION

[www.supremehomes.ca](http://www.supremehomes.ca)